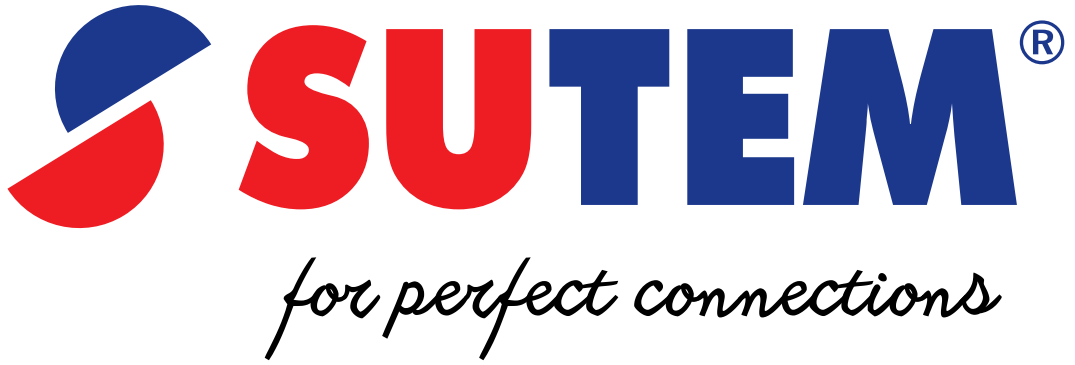


2024 - 1

FIYAT LİSTESİ



Sutem Elektrik fiyat listesindeki yazım hatası ve baskı hatalarından dolayı sorumlu değildir.
Sutem Elektrik fiyat listesinde yayınlanmış olduğumuz teknik özellik ve çizimleri ürün yenileme, değiştirme,
döviz ve hammadde artışlarından dolayı meydana gelebilecek fiyat artışlarını hiçbir uyarıda bulunmaksızın
Sutem Elektrik fiyat listesine yansıtma hakkına sahiptir.



Günümüzde ki gelişen teknoloji üretim, pazarlama ve satış alanlarında firmalarının rekabetlerinin hızlı ve hatasız aynı zamanda da yenilikçi olmalarını zorunlu hale getirmiştir. Bu rekabete ortak olabilmek için tüm firmalar kıyasıya mücadele haline girmiş ve optimum kalite amacı ile en iyi malzemeyi en iyi fiyata ve tam istenilen zamanda teslim etmek için gerekli olan insan ve teknoloji yatırımlarında bulunmuşlardır.

Bu işlemler için kullanılan bilgisayar destekli otomasyon programlarını, nitelikli insan gücü ile destekleyerek, güler yüzlü hizmet vermek ve müşteri memnuniyetini sağlamak esas amacımız olarak; 2007 yılında İstanbul 'da kurulmuş olan şirketimiz sahip olduğu entellektüel bilgilerini sizlere daha iyi hizmet vermek için kullanmakta, hızlı bir şekilde gelişen teknolojinin her daim takipçisi olarak gerekli teknolojik yatırımlarına devam etmelidir.

Sahip olduğumuz güven ve bilgi ile piyasada fark yaratmak ve değerli müşterilerimizin yararına olan tüm yenilikleri sizlere sunmayı görev bilen bizler, güveniniz ve desteğiniz ile geleceğe olan yürüyüşümüzü aynı kararlılıkla devam ettirmekte ve her zaman sizleri yanımızda görmekten mutluluk duymaktayız.



Today's developing technology in the fields of production, marketing and sales is rapidly increasing the competition of companies. and error-free and at the same time innovative to be a part of this competition . for this purpose , all companies have entered into a fierce struggle and use the best material with the aim of optimum quality. the people and technology needed to deliver at the right price and on time have invested.

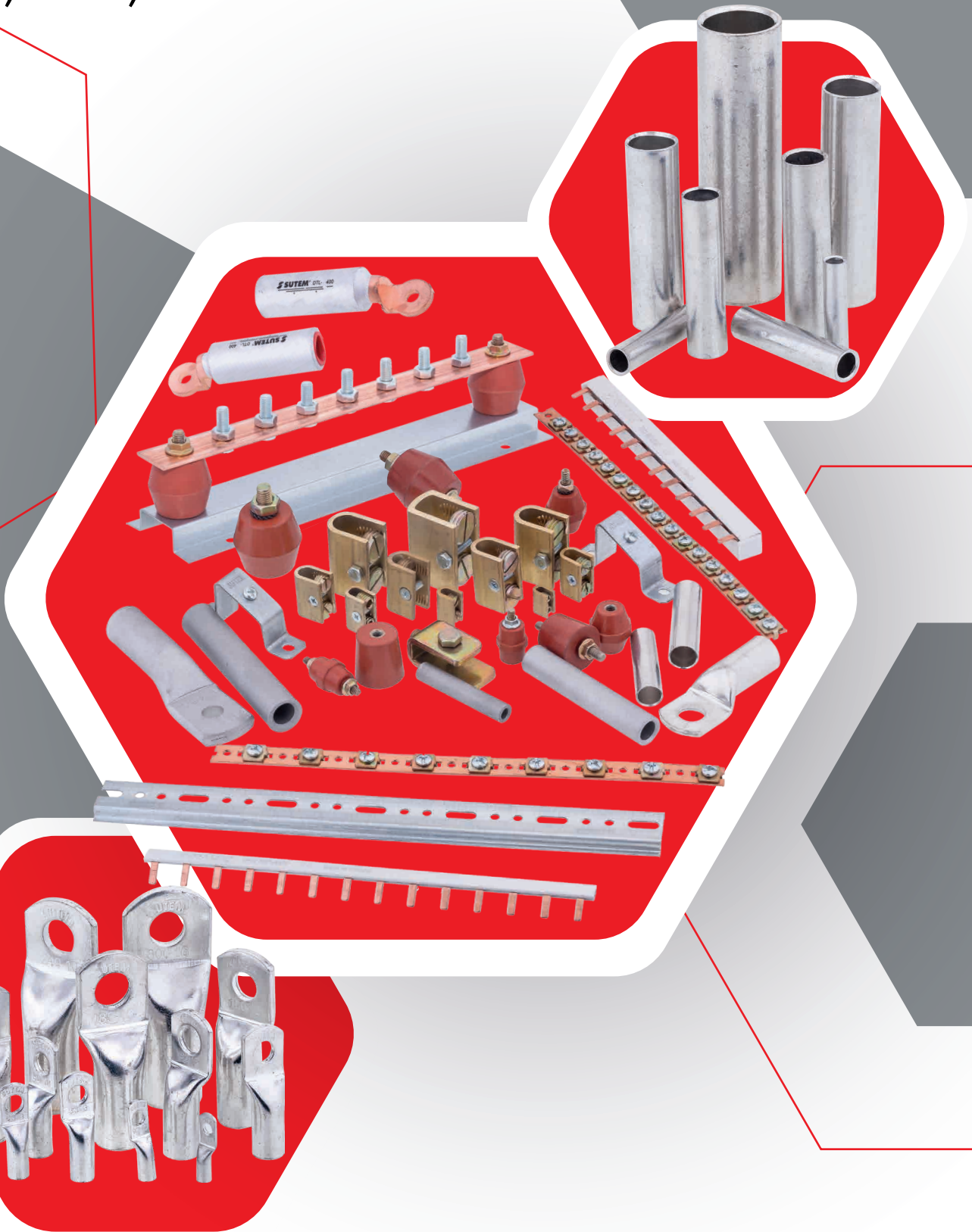
Computer-aided automation programs used for these processes, with qualified manpower. Our main aim is to provide friendly service and customer satisfaction by supporting; Our company, which was established in İstanbul in 2007, can better provide you with its intellectual knowledge . to serve, as a follower of the rapidly developing technology. continues its technological investments.

To make a difference in the market with the trust and knowledge we have and to do all the work for the benefit of our valued customers . We who take it as our duty to present innovations to you, continue our walk to the future with your trust and support. We continue with the same determination and we are always happy to see you by our side.

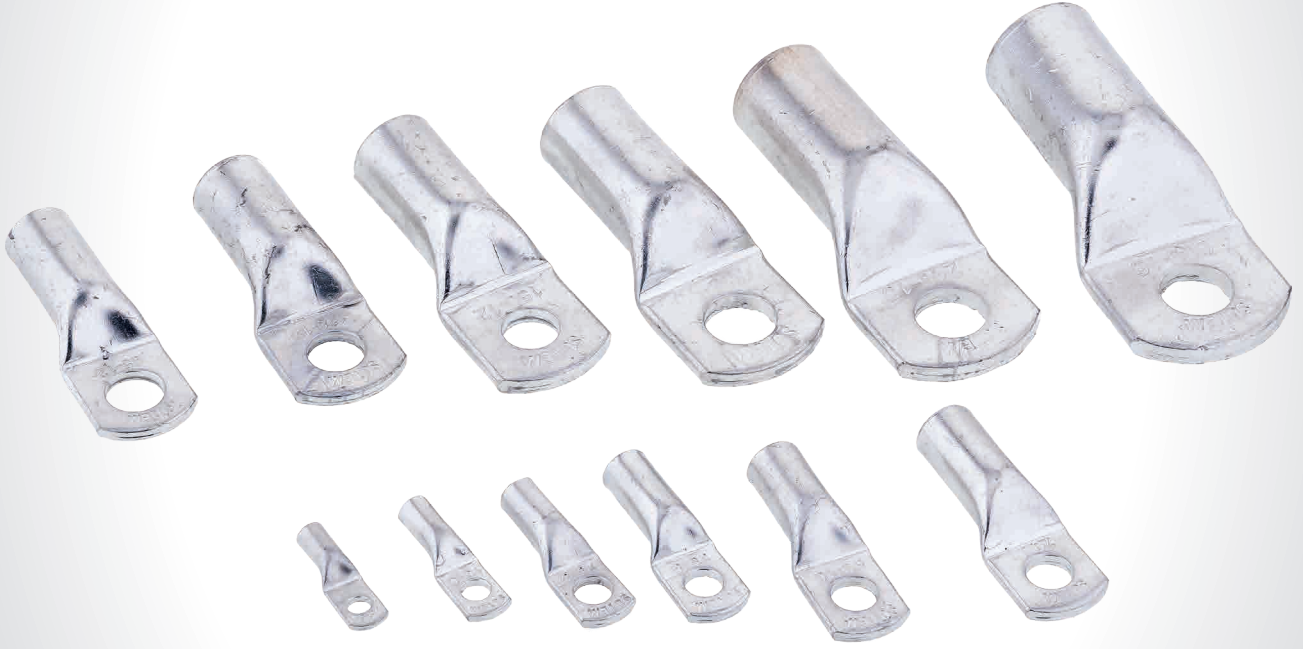


SUTEM[®]

for perfect connections



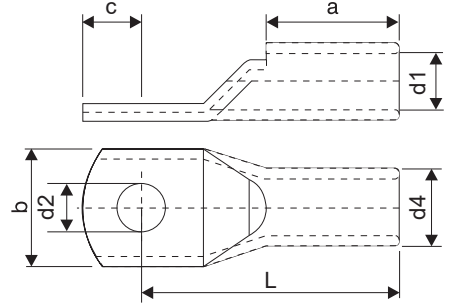
www.sutemelektrik.com



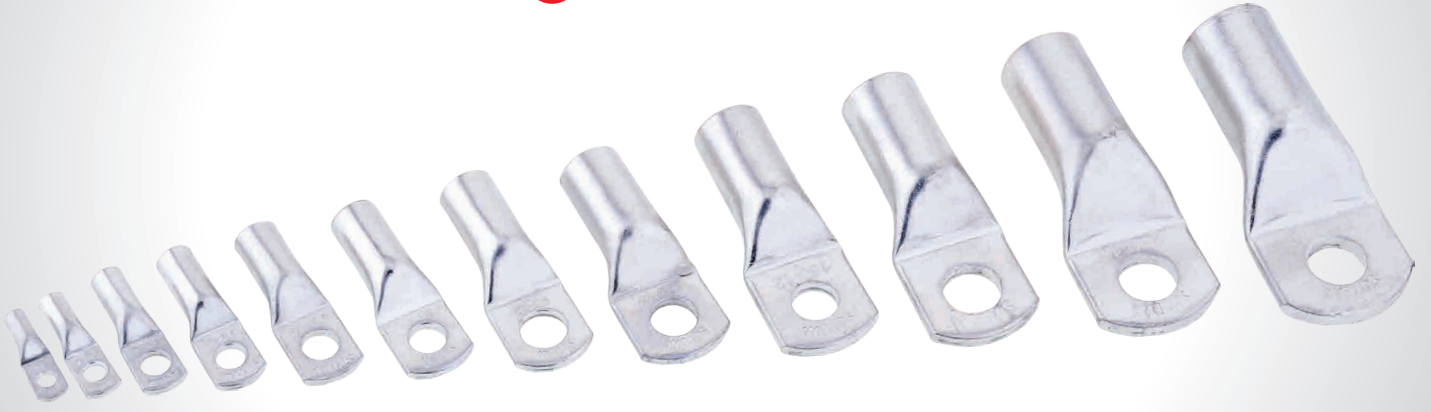
BAKIR KABLO PABUCLARI EKONOMİK TİP COPPER CABLE LUGS ECONOMIC TYPE

Gözde yalıtımsız düz boru kablo pabuçları tip tasarımı.
Soket: DIN EN 13600'e göre bakır Yüzey kalay kaplı.
Sıcaklık aralığı: +120° C'ye kadar.

Popular non-insulated straight tube cable lugs type design.
Socket: copper according to DIN EN 13600. Surface tin-plated.
Temperature range: up to + 120°C



| KOD CODE | b | d2 | L | c | L+c | a | d1 | d4 | ÜRÜN AĞIRLIĞI PRODUCT WEIGHT | KUTU AĞIRLIĞI BOX WEIGHT | KUTU ADET BOX PİECES | FİYAT (TÜRK LİRASI) |
|-------------|------|-----|------|------|------|------|------|------|---------------------------------|-----------------------------|-------------------------|------------------------|
| STM-16 E | 10,5 | M6 | 24,0 | 7,5 | 31,5 | 12,5 | 5,6 | 6,9 | 3,25g | ~1,7kg | 500 | 12,75 |
| STM-16 E | 12,5 | M8 | 23,5 | 8,5 | 32,0 | 12,5 | 5,6 | 6,9 | 3,15g | ~1,6kg | 500 | 12,75 |
| STM-25 E | 13,0 | M6 | 31,0 | 8,5 | 39,5 | 17,5 | 7,0 | 8,8 | 6,50g | ~2,3kg | 350 | 22,00 |
| STM-25 E | 13,0 | M8 | 31,0 | 8,5 | 39,5 | 17,5 | 7,0 | 8,8 | 6,50g | ~2,3kg | 350 | 22,00 |
| STM-35 E | 15,5 | M6 | 34,0 | 9,5 | 43,5 | 17,5 | 8,2 | 10,0 | 9,20g | ~1,9kg | 200 | 34,00 |
| STM-35 E | 15,5 | M8 | 34,0 | 9,5 | 43,5 | 17,5 | 8,2 | 10,0 | 9,20g | ~1,9kg | 200 | 34,00 |
| STM-50 E | 18,0 | M8 | 40,5 | 11,0 | 51,5 | 21,0 | 10,2 | 11,8 | 11,90g | ~1,8kg | 150 | 41,25 |
| STM-50 E | 18,0 | M10 | 40,5 | 11,0 | 51,5 | 21,0 | 10,2 | 11,8 | 11,90g | ~1,8kg | 150 | 41,25 |
| STM-70 E | 20,5 | M8 | 44,0 | 12,0 | 56,0 | 24,0 | 11,7 | 13,9 | 20,45g | ~2,1kg | 100 | 64,00 |
| STM-70 E | 20,5 | M10 | 44,0 | 12,0 | 56,0 | 24,0 | 11,7 | 13,9 | 20,45g | ~2,1kg | 100 | 64,00 |
| STM-95 E | 23,5 | M10 | 48,5 | 12,5 | 61,0 | 25,5 | 13,6 | 15,6 | 22,85g | ~1,8kg | 75 | 74,00 |
| STM-95 E | 23,5 | M12 | 48,5 | 12,5 | 61,0 | 25,5 | 13,6 | 15,6 | 22,85g | ~1,8kg | 75 | 74,00 |
| STM-120 E | 26,5 | M10 | 55,0 | 14,0 | 69,0 | 30,0 | 15,5 | 17,7 | 33,25g | ~1,7kg | 50 | 98,50 |
| STM-120 E | 26,5 | M12 | 55,0 | 14,0 | 69,0 | 30,0 | 15,5 | 17,7 | 33,25g | ~1,7kg | 50 | 98,50 |
| STM-150 E | 29,5 | M10 | 61,5 | 16,5 | 77,5 | 37,0 | 16,7 | 19,7 | 54,95g | ~2,3kg | 40 | 151,50 |
| STM-150 E | 29,5 | M12 | 61,5 | 16,5 | 77,5 | 37,0 | 16,7 | 19,7 | 54,95g | ~2,3kg | 40 | 151,50 |
| STM-185 E | 32,5 | M12 | 67,5 | 16,5 | 84,5 | 41,0 | 18,8 | 21,9 | 68,20g | ~2,1kg | 30 | 183,50 |
| STM-185 E | 32,5 | M16 | 67,5 | 16,5 | 84,5 | 41,0 | 18,8 | 21,9 | 68,20g | ~2,1kg | 30 | 183,50 |
| STM-240 E | 37,0 | M12 | 74,5 | 16,5 | 91,0 | 43,0 | 21,2 | 25,0 | 108,10g | ~2,8kg | 25 | 281,00 |
| STM-240 E | 37,0 | M16 | 74,5 | 16,5 | 91,0 | 43,0 | 21,2 | 25,0 | 108,10g | ~2,8kg | 25 | 281,00 |

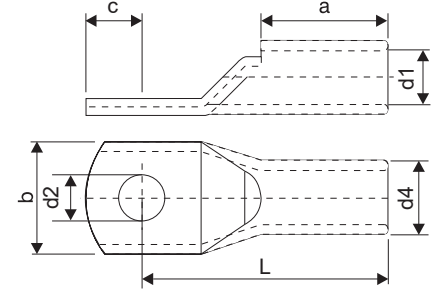


BAKIR KABLO PABUCLARI STANDART TİP

COPPER CABLE LUGS STANDARD TYPE

Gözde yalıtımsız düz boru kablo pabuçları tip tasarımı.
Soket: DIN EN 13600'e göre bakır yüzey kalay kaplı.
Sıcaklık aralığı: +120° C'ye kadar.

Popular non-insulated straight tube cable lugs type design.
Socket: copper according to DIN EN 13600. Surface tin-plated.
Temperature range: up to + 120°C



Özel metrik ürünler için lütfen stok bilgisi isteyiniz.
for special products, please request stock information.

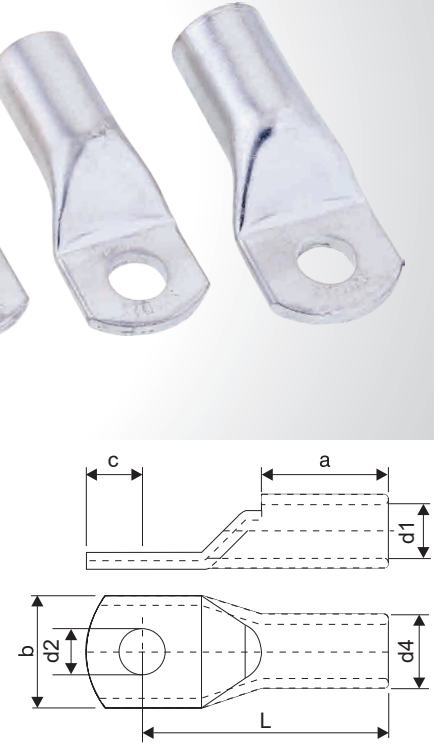
| KOD CODE | b | d2 | L | c | L+c | a | d1 | d4 | ÜRÜN AĞIRLIĞI PRODUCT WEIGHT | KUTU AĞIRLIĞI BOX WEIGHT | KUTU ADET BOX PİECES | FİYAT (TÜRK LİRASI) |
|-------------|------|-----|------|------|------|------|------|------|---------------------------------|-----------------------------|-------------------------|------------------------|
| STM-6 S | 8,5 | M5 | 20,0 | 6,0 | 26,0 | 10,5 | 4,0 | 5,5 | 2,35g | ~2,4 kg | 1000 | 12,50 |
| STM-10 S | 9,5 | M5 | 22,5 | 7,0 | 29,5 | 12,0 | 5,0 | 6,5 | 3,25g | ~2,7kg | 800 | 14,50 |
| STM-10 S | 11,0 | M6 | 23,0 | 6,5 | 29,5 | 12,0 | 5,0 | 6,5 | 3,10g | ~2,5kg | 800 | 15,00 |
| STM-10 S | 13,0 | M8 | 22,5 | 7,0 | 29,5 | 12,0 | 5,0 | 6,5 | 2,90g | ~2,4kg | 800 | 15,75 |
| STM-16 S | 11,0 | M6 | 26,5 | 7,5 | 34,0 | 15,0 | 5,7 | 7,7 | 5,70g | ~2,9kg | 500 | 19,65 |
| STM-16 S | 13,5 | M8 | 26,0 | 8,0 | 34,0 | 15,0 | 5,7 | 7,7 | 5,30g | ~2,7kg | 500 | 20,40 |
| STM-16 S | 14,5 | M10 | 26,0 | 8,0 | 34,0 | 15,0 | 5,7 | 7,7 | 5,00g | ~2,6kg | 500 | 21,40 |
| STM-25 S | 13,5 | M6 | 30,5 | 9,0 | 39,5 | 17,0 | 7,0 | 9,5 | 10,55g | ~3,8kg | 350 | 32,50 |
| STM-25 S | 13,5 | M8 | 30,5 | 9,0 | 39,5 | 17,0 | 7,0 | 9,5 | 10,10g | ~3,6kg | 350 | 32,50 |
| STM-25 S | 15,5 | M10 | 30,5 | 8,5 | 39,5 | 17,0 | 7,0 | 9,5 | 9,65g | ~3,4kg | 350 | 33,50 |
| STM-35 S | 16,0 | M6 | 36,0 | 9,5 | 45,5 | 19,0 | 8,5 | 11,0 | 14,60g | ~3,0kg | 200 | 46,00 |
| STM-35 S | 16,0 | M8 | 36,0 | 9,5 | 45,5 | 19,0 | 8,5 | 11,0 | 14,05g | ~2,9kg | 200 | 46,00 |
| STM-35 S | 17,0 | M10 | 36,0 | 9,5 | 45,5 | 19,0 | 8,5 | 11,0 | 13,20g | ~2,7kg | 200 | 47,00 |
| STM-35 S | 19,0 | M12 | 36,5 | 11,5 | 48,0 | 19,0 | 8,5 | 11,0 | 13,60g | ~2,8kg | 200 | 48,50 |
| STM-50 S | 18,5 | M6 | 40,0 | 11,5 | 51,5 | 20,5 | 10,0 | 13,0 | 24,00g | ~3,7kg | 150 | 65,80 |
| STM-50 S | 18,5 | M8 | 40,0 | 11,5 | 51,5 | 20,5 | 10,0 | 13,0 | 23,25g | ~3,5kg | 150 | 65,80 |
| STM-50 S | 18,5 | M10 | 40,0 | 11,5 | 51,5 | 20,5 | 10,0 | 13,0 | 22,35g | ~3,4kg | 150 | 65,80 |
| STM-50 S | 21,5 | M12 | 42,0 | 11,5 | 53,5 | 20,5 | 10,0 | 13,0 | 22,00g | ~3,4kg | 150 | 66,80 |
| STM-50 S | 20,5 | M14 | 40,0 | 11,5 | 51,5 | 20,5 | 10,0 | 13,0 | 21,80g | ~3,9kg | 150 | 67,80 |
| STM-70 S | 21,0 | M8 | 44,0 | 12,0 | 56,0 | 24,5 | 11,5 | 14,5 | 28,65g | ~2,9kg | 100 | 83,50 |
| STM-70 S | 21,0 | M10 | 44,0 | 12,0 | 56,0 | 24,5 | 11,5 | 14,5 | 28,25g | ~2,9kg | 100 | 83,50 |
| STM-70 S | 21,0 | M12 | 44,0 | 12,0 | 56,0 | 24,5 | 11,5 | 14,5 | 26,38g | ~2,7kg | 100 | 84,50 |
| STM-70 S | 21,0 | M14 | 47,0 | 10,5 | 57,5 | 24,0 | 11,5 | 14,5 | 26,00g | ~2,7kg | 100 | 86,00 |
| STM-95 S | 24,0 | M8 | 50,5 | 12,5 | 63,0 | 27,5 | 13,5 | 16,5 | 38,00g | ~2,9kg | 75 | 102,00 |
| STM-95 S | 24,0 | M10 | 50,5 | 12,5 | 63,0 | 27,5 | 13,5 | 16,5 | 37,00g | ~2,8kg | 75 | 102,00 |
| STM-95 S | 24,0 | M12 | 50,5 | 12,5 | 63,0 | 27,5 | 13,5 | 16,5 | 36,00g | ~2,8kg | 75 | 102,00 |
| STM-95 S | 24,0 | M14 | 51,5 | 12,5 | 64,0 | 27,5 | 13,5 | 16,5 | 34,85g | ~2,7kg | 75 | 104,00 |
| STM-95 S | 26,0 | M16 | 51,0 | 14,0 | 65,0 | 27,5 | 13,5 | 16,5 | 34,00g | ~2,6kg | 75 | 106,00 |

BAKIR KABLO PABUCLARI STANDART TİP

COPPER CABLE LUGS STANDARD TYPE

Gözde yalıtımsız düz boru kablo pabuçları tip tasarımı.
Soket: DIN EN 13600'e göre bakır yüzey kalay kaplı.
Sıcaklık aralığı: +120° C'ye kadar.

Popular non-insulated straight tube cable lugs type design.
Socket: copper according to DIN EN 13600. Surface tin-plated.
Temperature range: up to + 120°C



Özel metrik ürünler için lütfen stok bilgisi isteyiniz.
for special products, please request stock information.

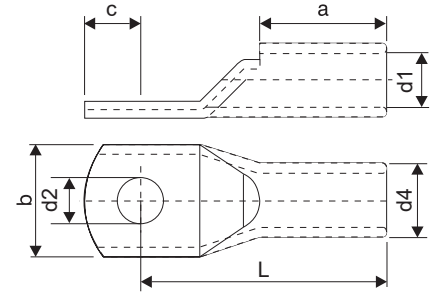
| KOD CODE | b | d2 | L | c | L+c | a | d1 | d4 | ÜRÜN AĞIRLIĞI PRODUCT WEIGHT | KUTU AĞIRLIĞI BOX WEIGHT | KUTU ADET BOX PİECES | FİYAT (TÜRK LİRASI) |
|-------------|------|-----|------|------|-------|------|------|------|---------------------------------|-----------------------------|-------------------------|------------------------|
| STM-120 S | 26,5 | M8 | 55,0 | 14,0 | 69,0 | 30,0 | 15,5 | 19,0 | 56,30g | ~2,9kg | 50 | 148,00 |
| STM-120 S | 26,5 | M10 | 55,0 | 14,0 | 69,0 | 30,0 | 15,5 | 19,0 | 55,25g | ~2,8kg | 50 | 148,00 |
| STM-120 S | 26,5 | M12 | 55,0 | 14,0 | 69,0 | 30,0 | 15,5 | 19,0 | 54,10g | ~2,8kg | 50 | 148,00 |
| STM-120 S | 26,5 | M14 | 55,0 | 14,0 | 69,0 | 30,0 | 15,5 | 19,0 | 54,00g | ~2,8kg | 50 | 151,00 |
| STM-120 S | 26,5 | M16 | 55,5 | 14,5 | 69,5 | 30,5 | 15,5 | 19,0 | 53,80g | ~2,8kg | 50 | 153,00 |
| STM-150 S | 30,5 | M10 | 61,5 | 16,0 | 77,5 | 33,0 | 16,5 | 21,0 | 84,50g | ~3,4kg | 40 | 228,00 |
| STM-150 S | 30,5 | M12 | 61,5 | 16,0 | 77,5 | 33,0 | 16,5 | 21,0 | 84,00g | ~3,4kg | 40 | 228,00 |
| STM-150 S | 30,5 | M14 | 61,5 | 16,0 | 77,5 | 33,0 | 16,5 | 21,0 | 83,30g | ~3,4kg | 40 | 230,00 |
| STM-150 S | 30,5 | M16 | 61,5 | 16,0 | 77,5 | 33,0 | 16,5 | 21,0 | 81,00g | ~3,3kg | 40 | 232,00 |
| STM-185 S | 33,5 | M10 | 68,0 | 16,5 | 84,5 | 37,5 | 18,5 | 23,0 | 103,20g | ~3,2kg | 30 | 280,00 |
| STM-185 S | 33,5 | M12 | 68,0 | 16,5 | 84,5 | 37,5 | 18,5 | 23,0 | 102,50g | ~3,1kg | 30 | 280,00 |
| STM-185 S | 33,5 | M14 | 68,0 | 16,5 | 84,5 | 37,5 | 18,5 | 23,0 | 101,00g | ~3,1kg | 30 | 280,00 |
| STM-185 S | 33,5 | M16 | 68,0 | 16,5 | 84,5 | 37,5 | 18,5 | 23,0 | 98,30g | ~3,0kg | 30 | 280,00 |
| STM-240 S | 38,0 | M10 | 76,0 | 17,0 | 93,0 | 41,5 | 21,0 | 26,0 | 141,66g | ~3,6kg | 25 | 360,00 |
| STM-240 S | 38,0 | M12 | 76,0 | 17,0 | 93,0 | 41,5 | 21,0 | 26,0 | 139,83g | ~3,6kg | 25 | 360,00 |
| STM-240 S | 38,0 | M14 | 76,0 | 17,0 | 93,0 | 41,5 | 21,0 | 26,0 | 139,00g | ~3,5kg | 25 | 360,00 |
| STM-240 S | 38,0 | M16 | 76,0 | 17,0 | 93,0 | 41,5 | 21,0 | 26,0 | 136,10g | ~3,5kg | 25 | 360,00 |
| STM-300 S | 41,0 | M12 | 79,0 | 18,0 | 98,0 | 44,0 | 23,5 | 28,5 | 172,60g | ~3,5kg | 20 | 430,00 |
| STM-300 S | 41,0 | M14 | 79,0 | 18,0 | 98,0 | 44,0 | 23,5 | 28,5 | 172,60g | ~3,5kg | 20 | 430,00 |
| STM-300 S | 41,0 | M16 | 79,0 | 18,0 | 98,0 | 44,0 | 23,5 | 28,5 | 172,60g | ~3,5kg | 20 | 430,00 |
| STM-400 S | 48,0 | M14 | 79,0 | 25,0 | 110,0 | 50,0 | 27,0 | 33,0 | 256,60g | ~3,9kg | 10 | 503,50 |
| STM-400 S | 48,0 | M16 | 79,0 | 25,0 | 110,0 | 50,0 | 27,0 | 33,0 | 256,25g | ~3,9kg | 10 | 503,50 |
| STM-400 S | 48,0 | M20 | 79,0 | 25,0 | 110,0 | 50,0 | 27,0 | 33,0 | 249,00g | ~3,8kg | 10 | 503,50 |



BAKIR KABLO PABUCLARI (DIN NORM) COPPER CABLE LUGS (DIN NORM)

Gözde yalıtımsız düz boru kablo pabuçları tip tasarımı.
Soket: DIN EN 13600'e göre bakır Yüzey kalay kaplı.
Sıcaklık aralığı: +120° C'ye kadar.

Popular non-insulated straight tube cable lugs type design.
Socket: copper according to DIN EN 13600. Surface tin-plated.
Temperature range: up to + 120°C



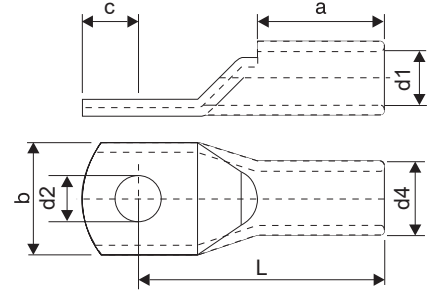
| KOD CODE | b | d2 | L | c | L+c | a | d1 | d4 | KUTU ADET BOX PIECES | FİYAT (TÜRK LİRASI) |
|-------------|------|-----|------|------|------|------|------|------|-------------------------|------------------------|
| STM-16 D | 13,0 | M6 | 36,0 | 7,5 | 43,5 | 20,0 | 5,5 | 8,5 | 200 | 36,50 |
| STM-16 D | 13,0 | M8 | 36,0 | 10,0 | 46,0 | 20,0 | 5,5 | 8,5 | 200 | 36,50 |
| STM-16 D | 17,0 | M10 | 36,0 | 12,0 | 48,0 | 20,0 | 5,5 | 8,5 | 200 | 39,00 |
| STM-25 D | 14,0 | M6 | 38,0 | 7,5 | 45,5 | 20,0 | 7,0 | 10,0 | 175 | 47,50 |
| STM-25 D | 16,0 | M8 | 38,0 | 10,0 | 48,0 | 20,0 | 7,0 | 10,0 | 175 | 47,50 |
| STM-25 D | 17,0 | M10 | 38,0 | 12,0 | 50,0 | 20,0 | 7,0 | 10,0 | 175 | 49,50 |
| STM-25 D | 19,0 | M12 | 38,0 | 13,0 | 51,0 | 20,0 | 7,0 | 10,0 | 150 | 52,00 |
| STM-35 D | 17,0 | M8 | 42,0 | 10,0 | 52,0 | 20,0 | 8,2 | 12,5 | 100 | 87,50 |
| STM-35 D | 19,0 | M10 | 42,0 | 12,0 | 54,0 | 20,0 | 8,2 | 12,5 | 100 | 87,50 |
| STM-35 D | 21,0 | M12 | 42,0 | 13,0 | 55,0 | 20,0 | 8,2 | 12,5 | 100 | 89,40 |
| STM-50 D | 20,0 | M8 | 52,0 | 10,0 | 62,0 | 28,0 | 10,0 | 14,5 | 60 | 124,75 |
| STM-50 D | 22,0 | M10 | 52,0 | 12,0 | 64,0 | 28,0 | 10,0 | 14,5 | 60 | 124,75 |
| STM-50 D | 24,0 | M12 | 52,0 | 13,0 | 65,0 | 28,0 | 10,0 | 14,5 | 60 | 124,75 |
| STM-70 D | 24,0 | M8 | 55,0 | 10,0 | 65,0 | 28,0 | 11,5 | 16,5 | 50 | 160,00 |
| STM-70 D | 24,0 | M10 | 55,0 | 12,0 | 67,0 | 28,0 | 11,5 | 16,5 | 50 | 160,00 |
| STM-70 D | 24,0 | M12 | 55,0 | 13,0 | 68,0 | 28,0 | 11,5 | 16,5 | 50 | 164,00 |
| STM-95 D | 28,0 | M10 | 65,0 | 12,0 | 77,0 | 35,0 | 13,5 | 19,0 | 35 | 230,00 |
| STM-95 D | 28,0 | M12 | 65,0 | 13,0 | 78,0 | 35,0 | 13,5 | 19,0 | 35 | 230,00 |
| STM-95 D | 28,0 | M14 | 65,0 | 14,5 | 79,5 | 35,0 | 13,5 | 19,0 | 35 | 230,00 |



BAKIR KABLO PABUCLARI (DIN NORM) COPPER CABLE LUGS (DIN NORM)

Gözde yalıtımsız düz boru kablo pabuçları tip tasarım.
Soket: DIN EN 13600'e göre bakır yüzey kalay kaplı.
Sıcaklık aralığı: +120° C'ye kadar.

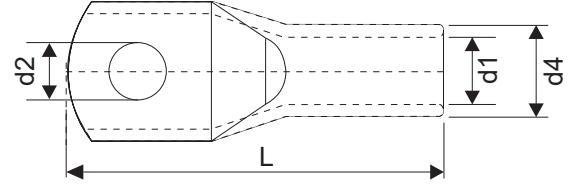
Popular non-insulated straight tube cable lugs type design.
Socket: copper according to DIN EN 13600. Surface tin-plated.
Temperature range: up to + 120°C



| KOD CODE | b | d2 | L | c | L+c | a | d1 | d4 | KUTU ADET BOX PİECES | FİYAT (TÜRK LİRASI) |
|-------------|------|-----|-------|------|-------|------|------|------|-------------------------|------------------------|
| STM-120 D | 32,0 | M10 | 70,0 | 15,0 | 85,0 | 35,0 | 15,5 | 21,0 | 30 | 291,75 |
| STM-120 D | 32,0 | M12 | 70,0 | 16,0 | 86,0 | 35,0 | 15,5 | 21,0 | 30 | 291,75 |
| STM-120 D | 32,0 | M14 | 70,0 | 18,0 | 88,0 | 35,0 | 15,5 | 21,0 | 30 | 295,00 |
| STM-150 D | 34,0 | M10 | 78,0 | 15,0 | 93,0 | 35,0 | 17,0 | 23,5 | 15 | 419,00 |
| STM-150 D | 34,0 | M12 | 78,0 | 16,0 | 94,0 | 35,0 | 17,0 | 23,5 | 15 | 419,00 |
| STM-150 D | 34,0 | M14 | 78,0 | 19,0 | 97,0 | 35,0 | 17,0 | 23,5 | 15 | 424,00 |
| STM-185 D | 37,0 | M10 | 82,0 | 15,0 | 97,0 | 40,0 | 19,0 | 25,5 | 12 | 471,50 |
| STM-185 D | 37,0 | M12 | 82,0 | 16,0 | 98,0 | 40,0 | 19,0 | 25,5 | 12 | 471,50 |
| STM-185 D | 37,0 | M14 | 82,0 | 19,0 | 101,0 | 40,0 | 19,0 | 25,5 | 12 | 471,50 |
| STM-185 D | 37,0 | M16 | 82,0 | 19,0 | 101,0 | 40,0 | 19,0 | 25,5 | 12 | 471,50 |
| STM-240 D | 42,0 | M12 | 92,0 | 16,0 | 108,0 | 40,0 | 21,5 | 29,0 | 8 | 675,00 |
| STM-240 D | 42,0 | M14 | 92,0 | 19,0 | 111,0 | 40,0 | 21,5 | 29,0 | 8 | 675,00 |
| STM-240 D | 42,0 | M16 | 92,0 | 19,0 | 111,0 | 40,0 | 21,5 | 29,0 | 8 | 675,00 |
| STM-300 D | 48,0 | M16 | 100,0 | 19,0 | 119,0 | 50,0 | 24,5 | 32,0 | 8 | 783,00 |
| STM-300 D | 48,0 | M20 | 100,0 | 22,0 | 122,0 | 50,0 | 24,5 | 32,0 | 8 | 783,00 |
| STM-400 D | 55,0 | M16 | 115,0 | 25,0 | 140,0 | 70,0 | 27,5 | 38,5 | 5 | 1.575,00 |
| STM-400 D | 55,0 | M20 | 115,0 | 25,0 | 140,0 | 70,0 | 27,5 | 38,5 | 5 | 1.575,00 |



ALÜMİNYUM KABLO PABUCU ALUMINUM CABLE LUGS



- Ürün üzeri 3 kaplamadan yapılmıştır. • On the product It consists of 3 coatings.
- * Temizleme * Clearing
- * Bakır Kaplama * Copper Plated
- * Elektron Kumlama * Electron Sandblasting

| KOD CODE | KESİT SECTION | d2 | AÇIKLAMA EXPLANATION | L | d1 | d4 | ÜRÜN AĞIRLIĞI PRODUCT WEIGHT | KUTU AĞIRLIĞI BOX WEIGHT | KUTU ADET BOX PIECES | FİYAT (TÜRK LİRASI) |
|-------------|------------------|-----|-------------------------|-------|------|----|---------------------------------|-----------------------------|-------------------------|------------------------|
| STM ALS-16 | 16mm | M8 | Kablo pabucu (Alm.) | 57,5 | 6,0 | 10 | 7,15g | ~3,0kg | 400 | 13,50 |
| STM ALS-25 | 25mm | M8 | Kablo Pabucu (Alm.) | 63,5 | 7,0 | 12 | 11,60g | ~3,6kg | 300 | 17,50 |
| STM ALS-35 | 35mm | M8 | Kablo pabucu (Alm.) | 74,0 | 8,0 | 14 | 17,50g | ~2,7kg | 150 | 29,75 |
| STM ALS-50 | 50mm | M10 | Kablo Pabucu (Alm.) | 82,0 | 10,0 | 16 | 24,80g | ~3,2kg | 125 | 36,90 |
| STM ALS-70 | 70mm | M12 | Kablo pabucu (Alm.) | 95,0 | 12,0 | 18 | 35,00g | ~3,6kg | 100 | 50,75 |
| STM ALS-95 | 95mm | M12 | Kablo Pabucu (Alm.) | 100,0 | 13,7 | 21 | 47,62g | ~3,7kg | 75 | 69,80 |
| STM ALS-120 | 120mm | M12 | Kablo pabucu (Alm.) | 111,0 | 14,0 | 22 | 65,20g | ~3,4kg | 50 | 85,75 |
| STM ALS-150 | 150mm | M12 | Kablo Pabucu (Alm.) | 112,5 | 16,0 | 24 | 68,80g | ~2,9kg | 40 | 90,50 |
| STM ALS-185 | 185mm | M12 | Kablo pabucu (Alm.) | 126,5 | 17,7 | 26 | 96,20g | ~3,0kg | 30 | 125,60 |
| STM ALS-240 | 240mm | M12 | Kablo Pabucu (Alm.) | 142,0 | 21,0 | 30 | 120,80g | ~3,1kg | 25 | 146,50 |



ALÜMİNYUM SIKMALI EK MUFLAR ALUMINUM CLAMP ADDITIONAL MUFS

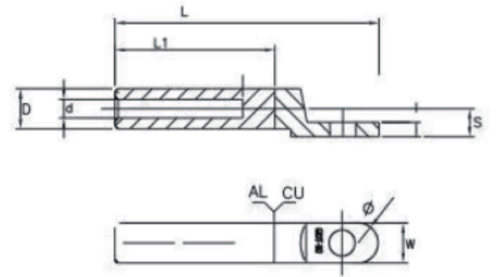
- Ürün üzeri 3 kaplamadan yapılmıştır. • On the product It consists of 3 coatings.
- * Temizleme * Clearing
- * Bakır Kaplama * Copper Plated
- * Elektron Kumlama * Electron Sandblasting



| KOD CODE | KESİT CROSS SECTION | AÇIKLAMA EXPLANATION | L | d1 | d2 | ÜRÜN AĞIRLIĞI PRODUCT WEIGHT | KUTU AĞIRLIĞI BOX WEIGHT | KUTU ADET BOX PIECES | FİYAT (TÜRK LİRASI) |
|-------------|---------------------|----------------------------|-----|----|------|------------------------------|--------------------------|----------------------|---------------------|
| STM ALM-16 | 16mm | Sıkmalı Ek Muf (Alüminyum) | 58 | 10 | 6,0 | 7,85g | ~3,3kg | 400 | 13,50 |
| STM ALM-25 | 25mm | Sıkmalı Ek Muf (Alüminyum) | 66 | 12 | 7,0 | 13,25g | ~3,4kg | 250 | 17,50 |
| STM ALM-35 | 35mm | Sıkmalı Ek Muf (Alüminyum) | 75 | 14 | 8,0 | 18,80g | ~2,9kg | 150 | 29,75 |
| STM ALM-50 | 50mm | Sıkmalı Ek Muf (Alüminyum) | 83 | 16 | 10,0 | 27,20g | ~3,5kg | 125 | 36,90 |
| STM ALM-70 | 70mm | Sıkmalı Ek Muf (Alüminyum) | 97 | 18 | 12,0 | 39,00g | ~4,0kg | 100 | 50,75 |
| STM ALM-95 | 95mm | Sıkmalı Ek Muf (Alüminyum) | 106 | 21 | 13,7 | 53,10g | ~4,1kg | 75 | 69,80 |
| STM ALM-120 | 120mm | Sıkmalı Ek Muf (Alüminyum) | 114 | 22 | 14,0 | 71,50g | ~3,7kg | 50 | 85,75 |
| STM ALM-150 | 150mm | Sıkmalı Ek Muf (Alüminyum) | 116 | 24 | 16,0 | 75,00g | ~3,1kg | 40 | 90,50 |
| STM ALM-185 | 185mm | Sıkmalı Ek Muf (Alüminyum) | 128 | 26 | 17,7 | 106,60g | ~3,3kg | 30 | 125,60 |
| STM ALM-240 | 240mm | Sıkmalı Ek Muf (Alüminyum) | 145 | 30 | 21,0 | 128,20g | ~3,3kg | 25 | 146,50 |



Bİ METAL DAR UÇLU KABLO PABUCU Bİ METAL NARROW ENDED CABLE LUGS

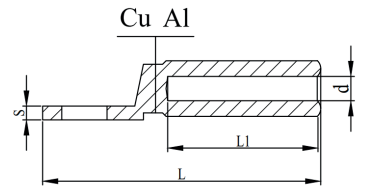
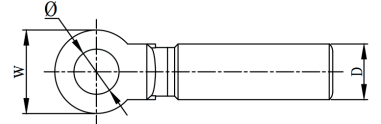


| KOD CODE | P+0.3 | D+0.5 | d+0.3 | L+3 | L1 | w+0.5 | S+0.3 | KUTU ADET BOX PIECES | FİYAT (100,00) |
|-------------|-------|-------|-------|-----|----|-------|-------|-------------------------|-------------------|
| STM ACL-16 | 6.5 | 10 | 6 | 65 | 30 | 10 | 3.5 | 20 | 3,00 \$ |
| STM ACL-25 | 8.5 | 12 | 7 | 73 | 34 | 13 | 3.8 | 20 | 3,00 \$ |
| STM ACL-35 | 8.5 | 14 | 8,5 | 78 | 40 | 14 | 4 | 20 | 3,00 \$ |
| STM ACL-50 | 8.5 | 16 | 10 | 88 | 42 | 16 | 4.3 | 10 | 3,90 \$ |
| STM ACL-70 | 8.5 | 18 | 11,5 | 93 | 49 | 20 | 4.5 | 10 | 3,90 \$ |
| STM ACL-95 | 10.5 | 21 | 13,5 | 100 | 50 | 20 | 5.3 | 10 | 3,90 \$ |
| STM ACL-120 | 10.5 | 23 | 15 | 105 | 52 | 22 | 6 | 5 | 6,90 \$ |
| STM ACL-150 | 10.5 | 25 | 16,5 | 112 | 56 | 25 | 6.2 | 5 | 6,90 \$ |
| STM ACL-185 | 12.5 | 27 | 18,5 | 121 | 60 | 28 | 6.7 | 5 | 12,00 \$ |
| STM ACL-240 | 12.5 | 30 | 21 | 124 | 60 | 30 | 7 | 5 | 12,00 \$ |



EURO MODEL

ALÜMİNYUM BAKIR KABLO PABUCU - BI METAL ALUMINUM COPPER CABLE LUGS - BI METAL

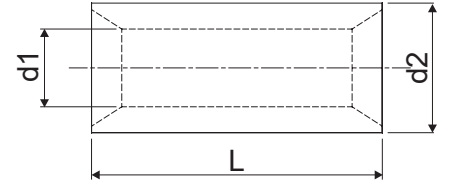


| KOD CODE | Ø | D | d | L | L1 | W | S | ÜRÜN AĞIRLIĞI PRODUCT WEIGHT | KUTU AĞIRLIĞI BOX WEIGHT | KUTU ADET BOX PIECES | FİYAT (BİRLİK) |
|-------------|----|----|------|-----|----|----|-----|---------------------------------|-----------------------------|-------------------------|-------------------|
| STM BI-16 | 11 | 16 | 6 | 80 | 40 | 20 | 3 | 37,60g | ~0,7kg | 20 | 3,00 \$ |
| STM BI-25 | 11 | 16 | 7 | 80 | 40 | 20 | 3 | 36,80g | ~0,7kg | 20 | 3,00 \$ |
| STM BI-35 | 11 | 16 | 8,5 | 80 | 40 | 20 | 3 | 34,50g | ~0,6kg | 20 | 3,00 \$ |
| STM BI-50 | 13 | 20 | 10 | 90 | 44 | 24 | 4 | 62,00g | ~0,6kg | 10 | 3,90 \$ |
| STM BI-70 | 13 | 20 | 11,5 | 90 | 44 | 24 | 4 | 59,00g | ~0,5kg | 10 | 3,90 \$ |
| STM BI-95 | 13 | 20 | 13,5 | 90 | 44 | 24 | 4 | 53,30g | ~0,5kg | 10 | 3,90 \$ |
| STM BI-120 | 13 | 25 | 15 | 115 | 60 | 30 | 4,5 | 112,00g | ~0,5kg | 5 | 6,90 \$ |
| STM BI-150 | 13 | 25 | 16,5 | 115 | 60 | 30 | 4,5 | 107,30g | ~0,5kg | 5 | 6,90 \$ |
| STM BI-185 | 13 | 32 | 18,5 | 122 | 60 | 35 | 6 | 207,00g | ~0,5kg | 5 | 12,00 \$ |
| STM BI-240 | 13 | 32 | 21 | 122 | 60 | 35 | 6 | 193,20g | ~1,0kg | 5 | 12,00 \$ |
| STM BI-300 | 13 | 34 | 23,5 | 128 | 65 | 35 | 6 | 205,30g | ~0,9kg | 5 | 13,75 \$ |
| STM BI-400 | 13 | 40 | 26 | 160 | 95 | 36 | 6 | 337,00g | ~1,6kg | 5 | 22,50 \$ |



BAKIR SIKMALI EK MUFLAR (EKO MODEL) COPPER CLAMP ADDITIONAL MUFS (ECO MODEL)

- Ürün üzeri 3 kaplamadan yapılmıştır. • On the product It consists of 3 coatings.
- * Temizleme * Clearing
- * Bakır Kaplama * Copper Plated
- * Elektron Kumlama * Electron Sandblasting

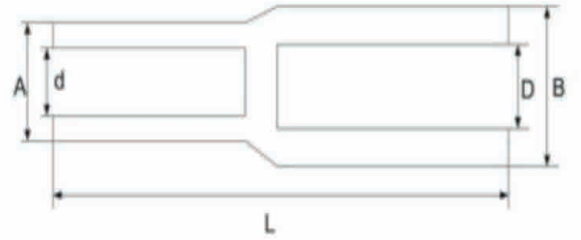


| KOD CODE | KESİT CROSS SECTION | AÇIKLAMA EXPLANATION | L | d1 | d2 | ÜRÜN AĞIRLIĞI PRODUCT WEIGHT | KUTU AĞIRLIĞI BOX WEIGHT | KUTU ADET BOX PIECES | FİYAT (TÜRK LİRASI) |
|-------------|---------------------|------------------------|----|------|------|------------------------------|--------------------------|----------------------|---------------------|
| STM SEM-10 | 10mm | Sıkmalı Ek Muf (Bakır) | 28 | 5,0 | 6,5 | 3,30g | ~2,7kg | 800 | 14,50 |
| STM SEM-16 | 16mm | Sıkmalı Ek Muf (Bakır) | 30 | 5,6 | 6,9 | 3,50g | ~1,8kg | 500 | 14,50 |
| STM SEM-25 | 25mm | Sıkmalı Ek Muf (Bakır) | 39 | 7,0 | 8,8 | 7,70g | ~2,4kg | 300 | 23,40 |
| STM SEM-35 | 35mm | Sıkmalı Ek Muf (Bakır) | 44 | 8,2 | 10,0 | 10,40g | ~2,1kg | 200 | 35,30 |
| STM SEM-50 | 50mm | Sıkmalı Ek Muf (Bakır) | 50 | 10,2 | 11,8 | 12,85g | ~2,0kg | 150 | 42,20 |
| STM SEM-70 | 70mm | Sıkmalı Ek Muf (Bakır) | 55 | 11,7 | 13,9 | 22,20g | ~2,3kg | 100 | 67,50 |
| STM SEM-95 | 95mm | Sıkmalı Ek Muf (Bakır) | 59 | 13,6 | 15,6 | 24,60g | ~1,9kg | 75 | 85,00 |
| STM SEM-120 | 120mm | Sıkmalı Ek Muf (Bakır) | 69 | 15,5 | 17,7 | 35,75g | ~1,8kg | 50 | 102,00 |
| STM SEM-150 | 150mm | Sıkmalı Ek Muf (Bakır) | 76 | 16,7 | 19,7 | 57,70g | ~2,4kg | 40 | 159,00 |
| STM SEM-185 | 185mm | Sıkmalı Ek Muf (Bakır) | 84 | 18,8 | 21,9 | 73,71g | ~2,3kg | 30 | 195,80 |
| STM SEM-240 | 240mm | Sıkmalı Ek Muf (Bakır) | 88 | 21,2 | 25,0 | 112,30g | ~2,9kg | 25 | 294,50 |



Bİ METAL SIKMALI EK MUF

Bİ METAL CLAMP ADDITIONAL MUFS

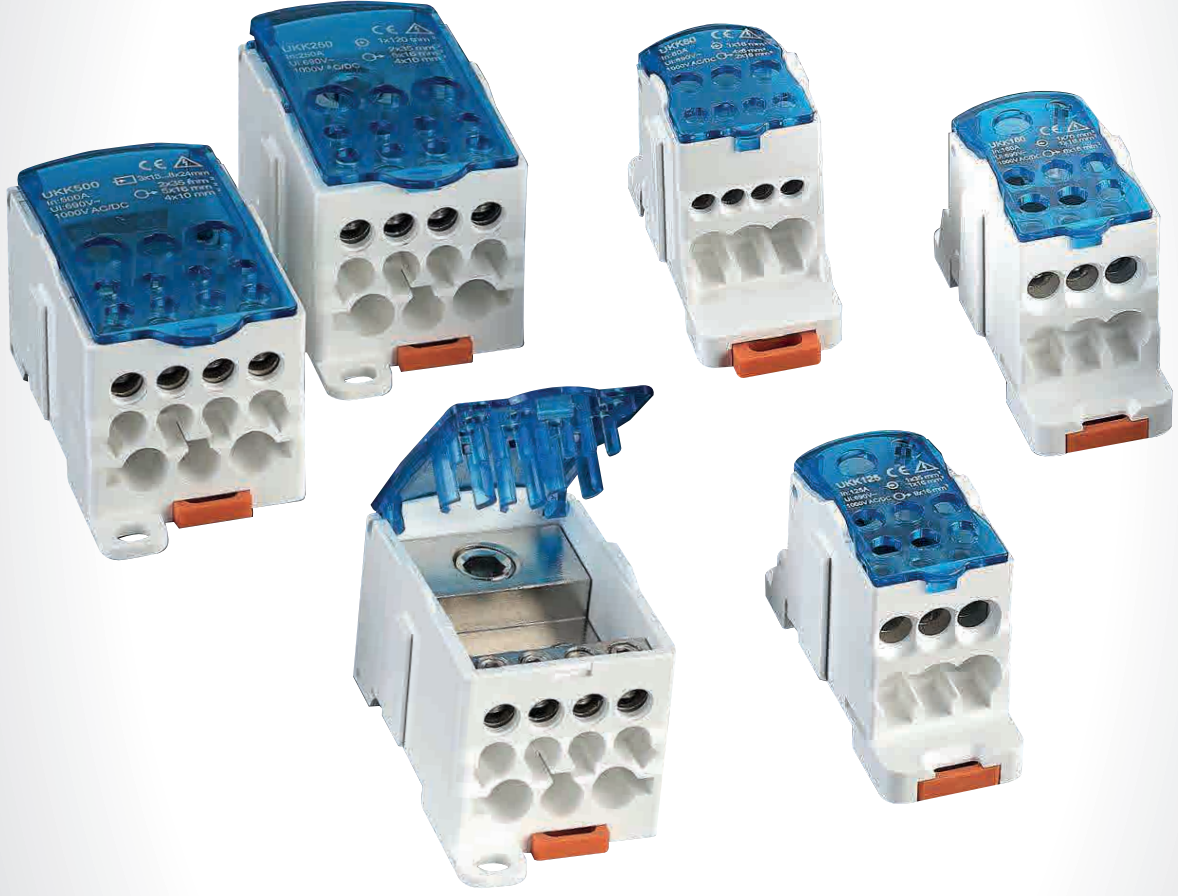


| KOD CODE | L | A | B | d | D | KUTU ADET BOX PIECES | FİYAT (DOLAR) |
|-------------|------|----|----|------|------|----------------------|---------------|
| STM GTL-16 | 70 | 9 | 10 | 5.7 | 6.5 | 20 | 3,00 \$ |
| STM GTL-25 | 75 | 10 | 12 | 6.5 | 7.5 | 20 | 3,00 \$ |
| STM GTL-35 | 84 | 11 | 14 | 7.5 | 8.5 | 20 | 3,00 \$ |
| STM GTL-50 | 89.5 | 12 | 16 | 8.5 | 10.2 | 10 | 3,90 \$ |
| STM GTL-70 | 98.5 | 14 | 18 | 10 | 11.5 | 10 | 3,90 \$ |
| STM GTL-95 | 106 | 16 | 21 | 11.5 | 13.5 | 10 | 3,90 \$ |
| STM GTL-120 | 109 | 18 | 23 | 13.5 | 15 | 5 | 6,90 \$ |
| STM GTL-150 | 116 | 20 | 25 | 15 | 16.5 | 5 | 6,90 \$ |
| STM GTL-185 | 125 | 22 | 27 | 16.5 | 18.5 | 5 | 12,00 \$ |
| STM GTL-240 | 130 | 24 | 30 | 18.5 | 21 | 5 | 12,00 \$ |



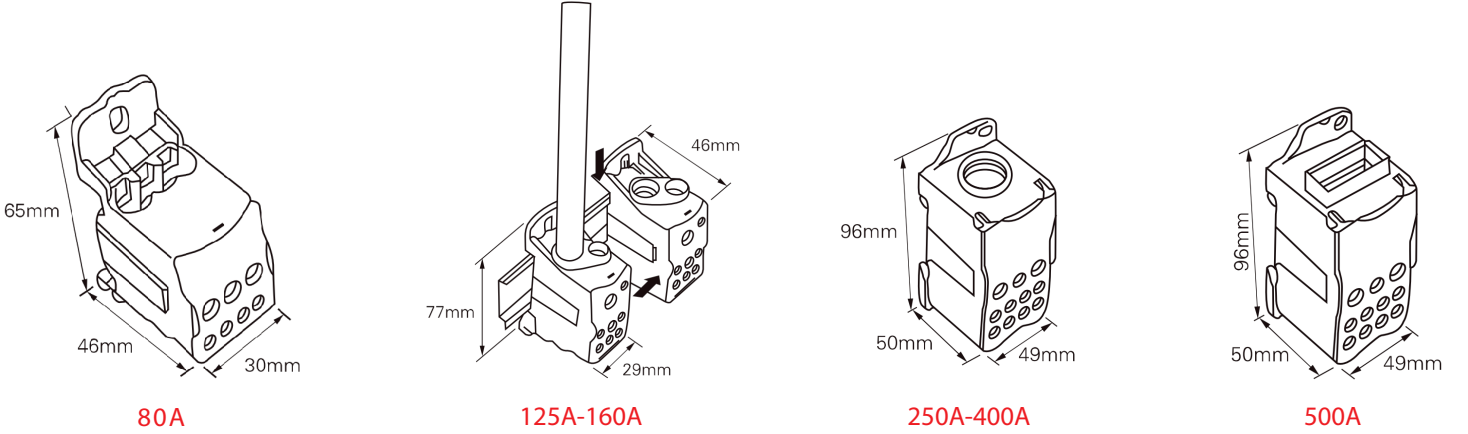
DAĞITIM ÜNİTESİ DISTRIBUTION UNIT

| KOD CODE | AÇIKLAMA EXPLANATION | AMPER | KUTUP | KUTU ADET BOX PIECES | FİYAT (TÜRK LİRASI) |
|-------------|-------------------------|-------|-------|-------------------------|------------------------|
| STM 207 | 2x7 Dağıtım Ünitesi | 125A | 2 | 1 | 290,00 |
| STM 211 | 2x11 Dağıtım Ünitesi | 125A | 2 | 1 | 430,00 |
| STM 215 | 2 x15 Dağıtım Ünitesi | 125A | 2 | 1 | 540,00 |
| STM 407 | 4 x7 Dağıtım Ünitesi | 125A | 4 | 1 | 540,00 |
| STM 411 | 4 x11 Dağıtım Ünitesi | 125A | 4 | 1 | 800,00 |
| STM 415 | 4 x15 Dağıtım Ünitesi | 125A | 4 | 1 | 975,00 |



TERMİNAL KONNEKTÖR KUTUSU

TERMINAL CONNECTOR BOX



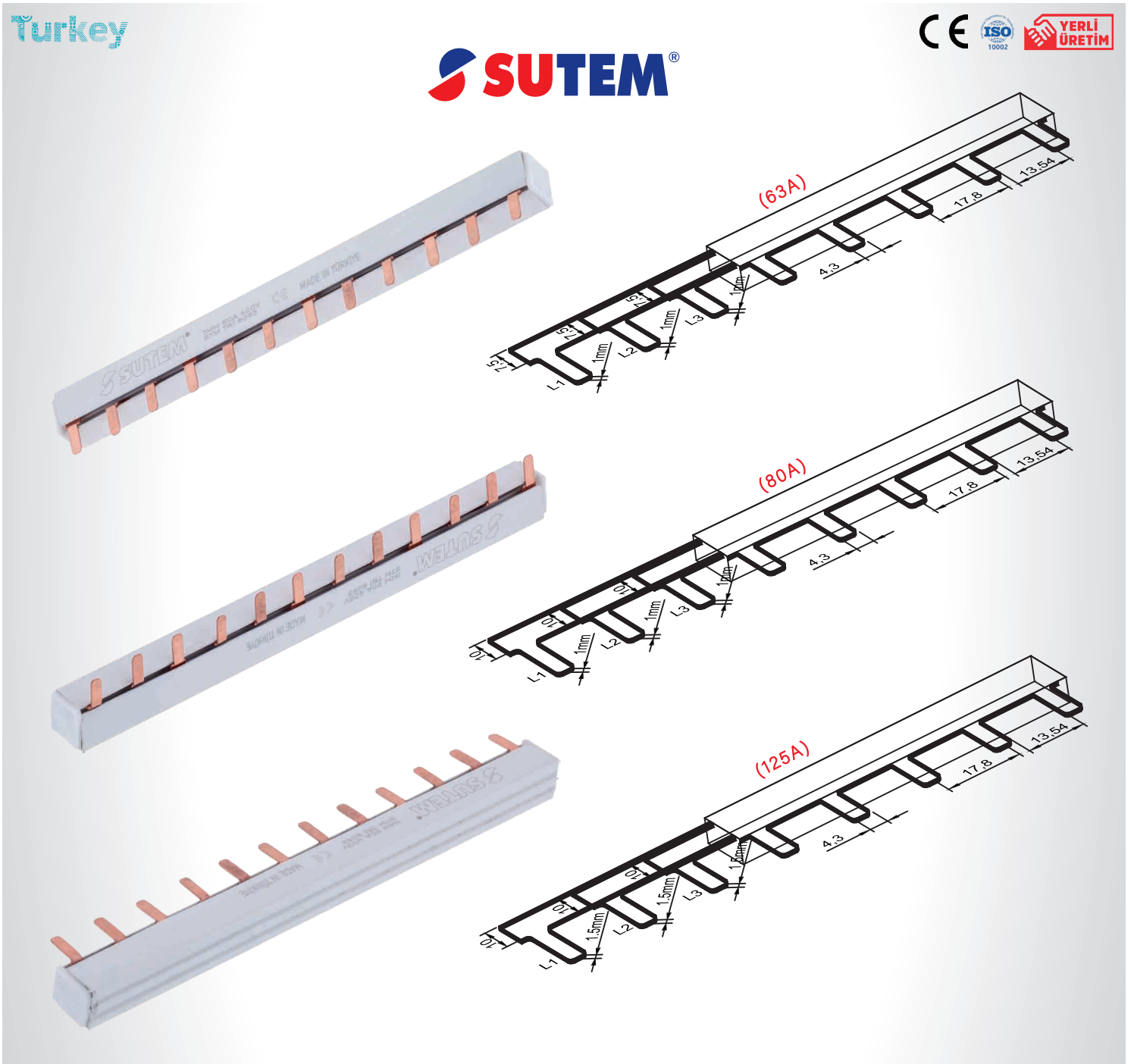
80A

125A-160A

250A-400A

500A

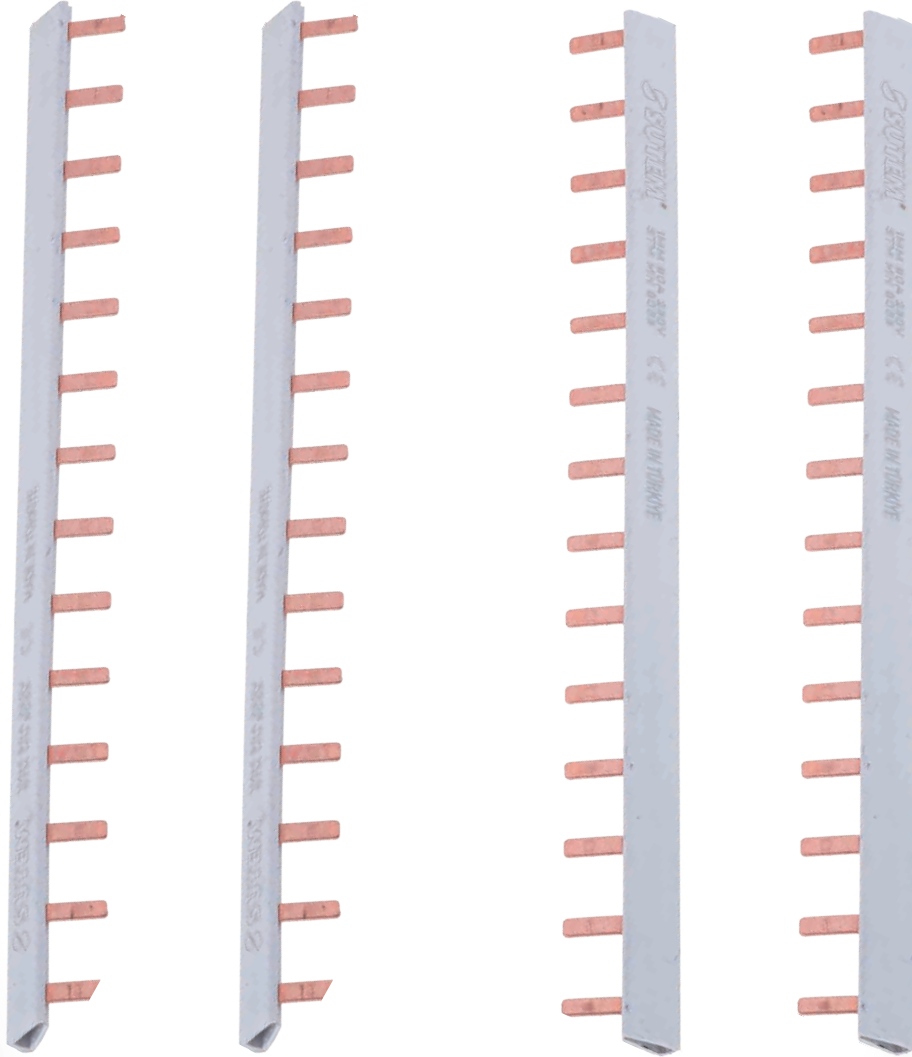
| KOD CODE | AÇIKLAMA EXPLANATION | AMPER | KUTU ADET BOX PIECES | FİYAT (TÜRK LİRASI) |
|--------------|---------------------------|-------|-------------------------|------------------------|
| STM UKK-80A | Terminal Konnektör Kutusu | 80A | 1 | 235,00 |
| STM UKK-125A | Terminal Konnektör Kutusu | 125A | 1 | 481,00 |
| STM UKK-160A | Terminal Konnektör Kutusu | 160A | 1 | 487,00 |
| STM UKK-250A | Terminal Konnektör Kutusu | 250A | 1 | 1.400,00 |
| STM UKK-400A | Terminal Konnektör Kutusu | 400A | 1 | 1.480,00 |
| STM UKK-500A | Terminal Konnektör Kutusu | 500A | 1 | 1.600,00 |



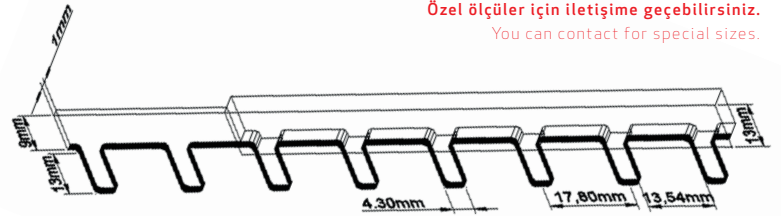
TRİFAZE W OTOMAT BARASI THREE-PHASE W VENDING BUSBAR

Özel ölçüler için iletişime geçebilirsiniz.
You can contact for special sizes.

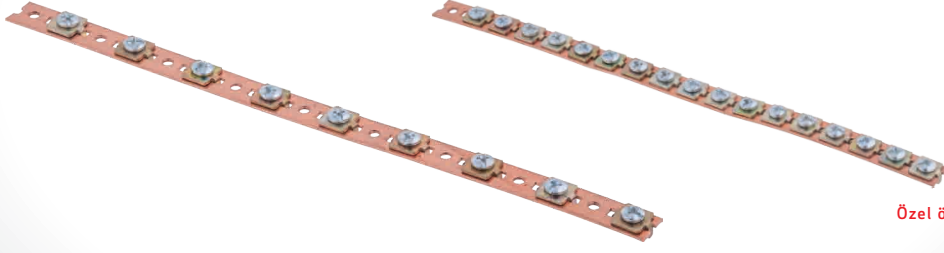
| KOD CODE | AÇIKLAMA EXPLANATION | AMPER | MODÜL | KUTU ADET BOX PIECES | FİYAT (TÜRK LİRASI) |
|----------------|----------------------------------|-------|-------|-------------------------|------------------------|
| STM TRİ-6353 | 1 mm Elektrolitik Bakır 53 cm | 63A | 10 | 25 | 450,00 |
| STM TRİ-63106 | 1 mm Elektrolitik Bakır 106 cm | 63A | 20 | 25 | 900,00 |
| STM TRİ-8053 | 1 mm Elektrolitik Bakır 53 cm | 80A | 10 | 25 | 520,00 |
| STM TRİ-80106 | 1 mm Elektrolitik Bakır 106 cm | 80A | 20 | 25 | 1.040,00 |
| STM TRİ-12553 | 1,5 mm Elektrolitik Bakır 53 cm | 125A | 10 | 25 | 820,00 |
| STM TRİ-125106 | 1,5 mm Elektrolitik Bakır 106 cm | 125A | 20 | 25 | 1.640,00 |
| STM TRİ-KPK | Trifaze Bara Yan Kapağı | - | - | 1000 | 6,75 |



MONOFAZE W OTOMAT BARASI MONOPHASE W VENDING BUSBAR



| KOD CODE | AÇIKLAMA EXPLANATION | AMPER | MODÜL | KUTU ADET BOX PİECES | FİYAT (TÜRK LİRASI) |
|---------------|----------------------------------|-------|-------|-------------------------|------------------------|
| STM MN-8053 | 1 mm Elektrolitik Bakır 53 cm | 80A | 30 | 50 | 210,00 |
| STM MN-80106 | 1 mm Elektrolitik Bakır 106 cm | 80A | 60 | 50 | 420,00 |
| STM MN-12553 | 1,5 mm Elektrolitik Bakır 53 cm | 125A | 30 | 50 | (Fiyat Sorunuz.) |
| STM MN-125106 | 1,5 mm Elektrolitik Bakır 106 cm | 125A | 60 | 50 | (Fiyat Sorunuz.) |



Özel ölçüler için iletişime geçebilirsiniz.
You can contact for special sizes.

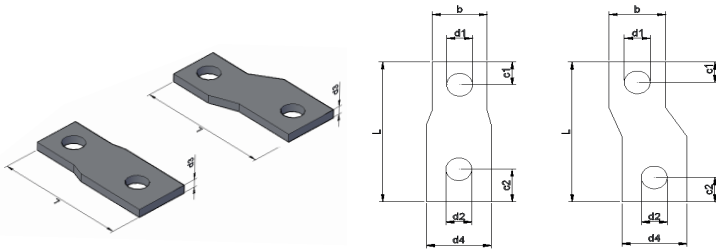
NÖTR TOPRAKLAMA BARASI NEUTRAL GROUNDING BUSBAR

| KOD CODE | AÇIKLAMA EXPLANATION | KUTU ADET BOX PIECES | FİYAT (TÜRK LİRASI) |
|--------------|-----------------------------|----------------------|---------------------|
| STM NTR-1531 | 15 x1,5 mm x1 metre 31 vida | 40 | 600,00 |
| STM NTR-1561 | 15 x1,5 mm x1 metre 61 vida | 40 | 715,00 |
| STM NTR-0231 | 15 x2 mm x1 metre 31 vida | 40 | 725,00 |
| STM NTR-0261 | 15 x2 mm x1 metre 61 vida | 40 | 820,00 |
| STM NTR-0331 | 15 x3 mm x1 metre 31 vida | 40 | 1.000,00 |
| STM NTR-0361 | 15 x3 mm x1 metre 61 vida | 40 | 1.105,00 |

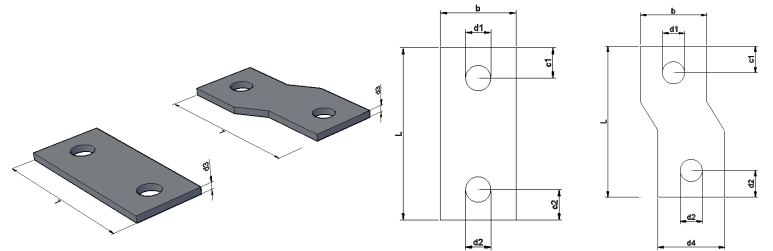


KOMPAKT UZATMA BARASI COMPACT EXTENSION BAR

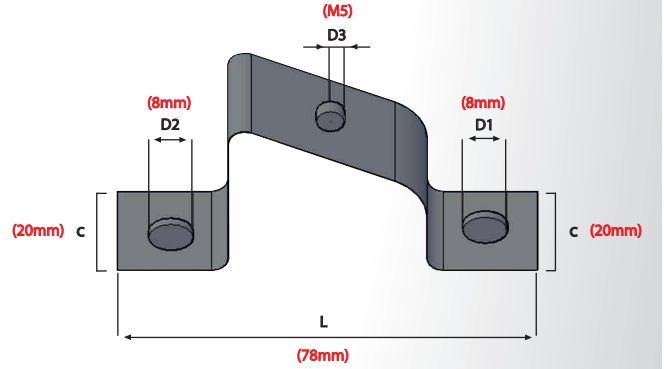
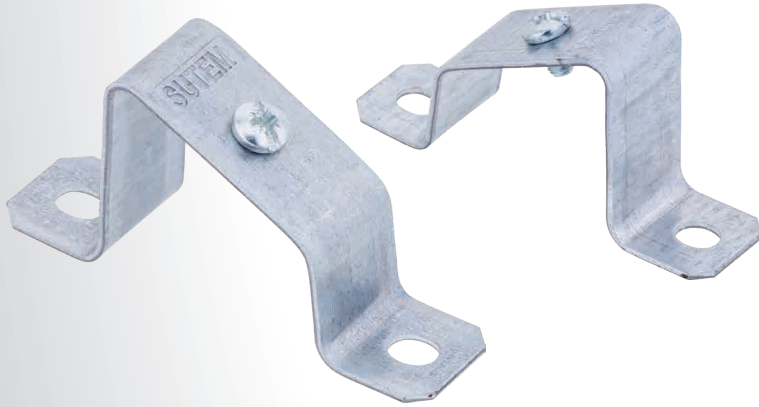
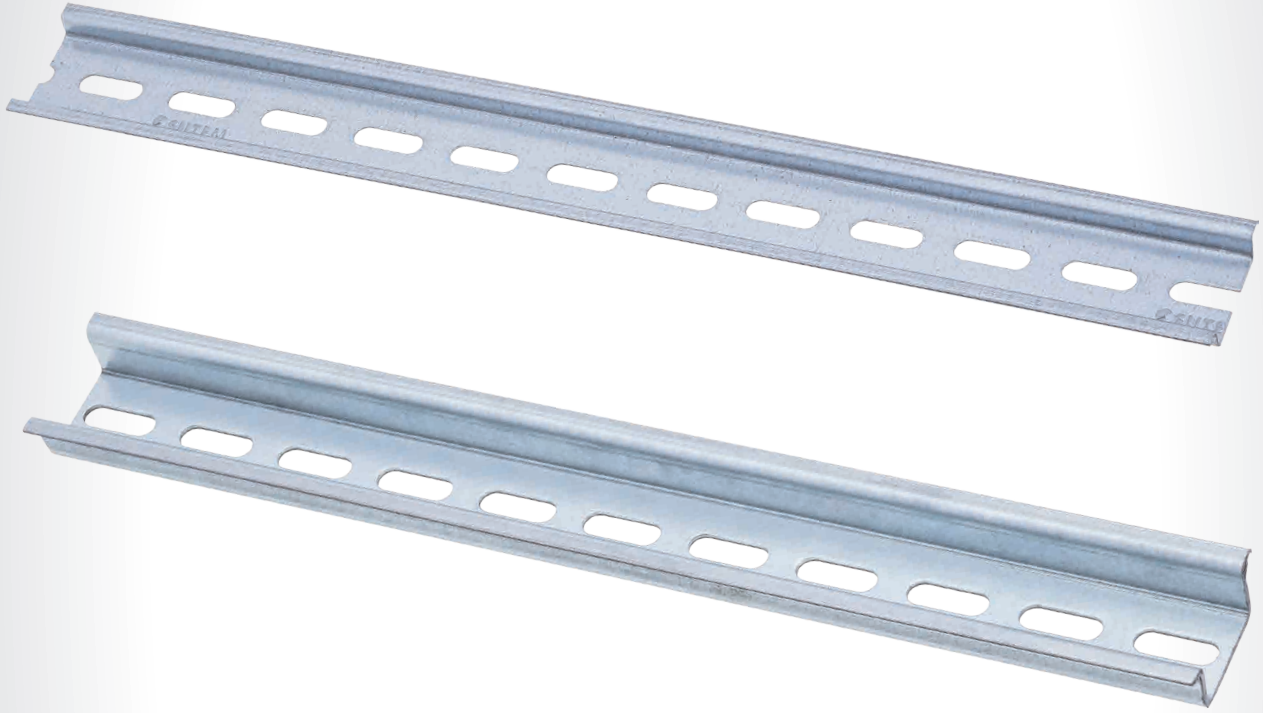
Kompakt Uzatma Barası (3mm)



Kompakt Uzatma Barası (5mm)



| KOD CODE | AÇIKLAMA EXPLANATION | d3 | b | d2 | L | c1 | c2 | d1 | d4 | KUTUP | MODÜL | KUTU ADET BOX PIECES | FİYAT (TÜRK LİRASI) |
|-----------|-----------------------|-----|----|-----|----|----|----|-----|----|-------|-------|----------------------|---------------------|
| STM-250-U | Kompakt Uzatma Barası | 3mm | 17 | M8 | 49 | 8 | 15 | M8 | 20 | 3 | 1 | 1 Takım | 970,00 |
| STM-400-U | Kompakt Uzatma Barası | 5mm | 30 | M10 | 68 | 12 | 14 | M10 | 30 | 3 | 1 | 1 Takım | 2.045,00 |



W OTOMAT RAYI DIN RAIL

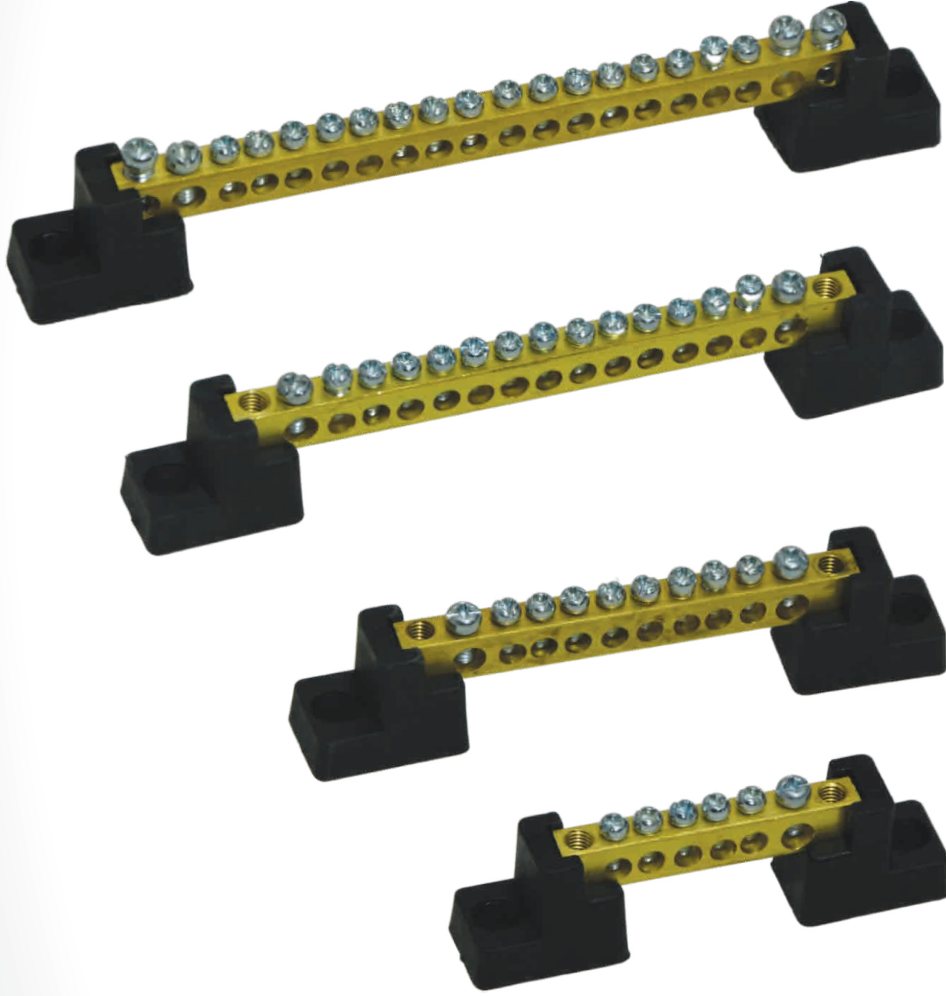
Özel ölçüler için iletişime geçebilirsiniz.
You can contact for special sizes.

| KOD CODE | AÇIKLAMA EXPLANATION | TABAN | UZUNLUK | KUTU ADET BOX PIECES | FİYAT (TÜRK LİRASI) |
|----------------|-------------------------|--------|---------|-------------------------|------------------------|
| STM-RAY-DL-030 | Delikli Sac Ray | 35x7,5 | 30 cm | 100 | 17,50 |
| STM-RAY-DL-1M | Delikli Sac Ray | 35x7,5 | 1m | 50 | 55,00 |
| STM-RAY-DL-2M | Delikli Sac Ray | 35x7,5 | 2m | 25 | 110,00 |
| STM-RAY-DZ-030 | Düz Sac Ray | 35x7,5 | 30 cm | 100 | 17,50 |
| STM-RAY-DZ-1M | Düz Sac Ray | 35x7,5 | 1 m | 50 | 55,00 |
| STM-RAY-DZ-2M | Düz Sac Ray | 35x7,5 | 2m | 25 | 110,00 |
| STM DRN-1M | Delikli Sac Ray | 35x15 | 1 m | 25 | 130,00 |
| STM DRN-2M | Delikli Sac Ray | 35x15 | 2m | 25 | 260,00 |
| STM 02-12 | Sac Ray Taşıyıcı | - | - | 100 | 19,00 |



PANO TOPRAKLAMA KLEMENS (AYAKSIZ) 6,5 x 9mm 80A
PANEL GROUNDING TERMINAL (WITHOUT FEET) 6,5 x 9mm 80A

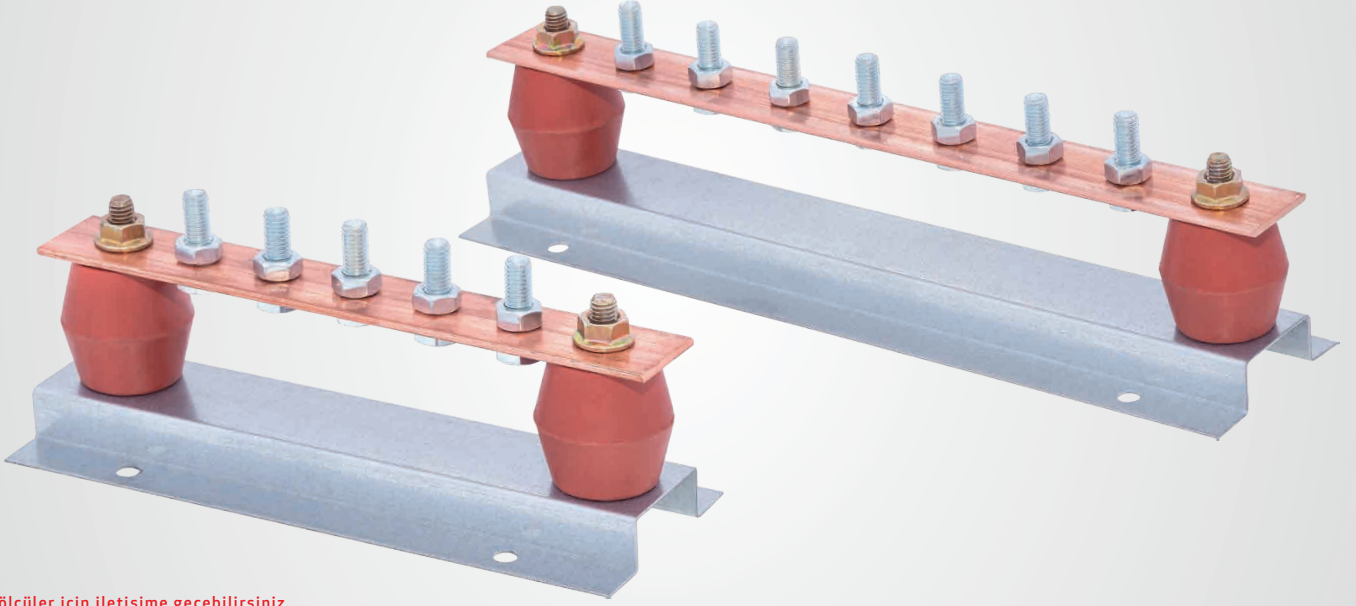
| KOD CODE | AÇIKLAMA EXPLANATION | KUTU ADET BOX PIECES | FİYAT (TÜRK LİRASI) |
|-------------|--------------------------------------|-------------------------|------------------------|
| STM5000 | 2+4 Delikli Pano Topraklama Klemens | 300 | 46,00 |
| STM5001 | 2+5 Delikli Pano Topraklama Klemens | 300 | 51,00 |
| STM5004 | 2+8 Delikli Pano Topraklama Klemens | 300 | 63,00 |
| STM5005 | 2+10 Delikli Pano Topraklama Klemens | 300 | 70,00 |
| STM5006 | 2+13 Delikli Pano Topraklama Klemens | 300 | 88,75 |
| STM5007 | 2+18 Delikli Pano Topraklama Klemens | 300 | 119,00 |
| STM5008 | 2+23 Delikli Pano Topraklama Klemens | 300 | 148,00 |
| STM5009 | 2+28 Delikli Pano Topraklama Klemens | 300 | 177,50 |



PANO TOPRAKLAMA KLEMENS (AYAKLI) 6,5 x 9mm 80A

PANEL GROUNDING TERMINAL (WITH FEET) 6,5x 9mm 80A

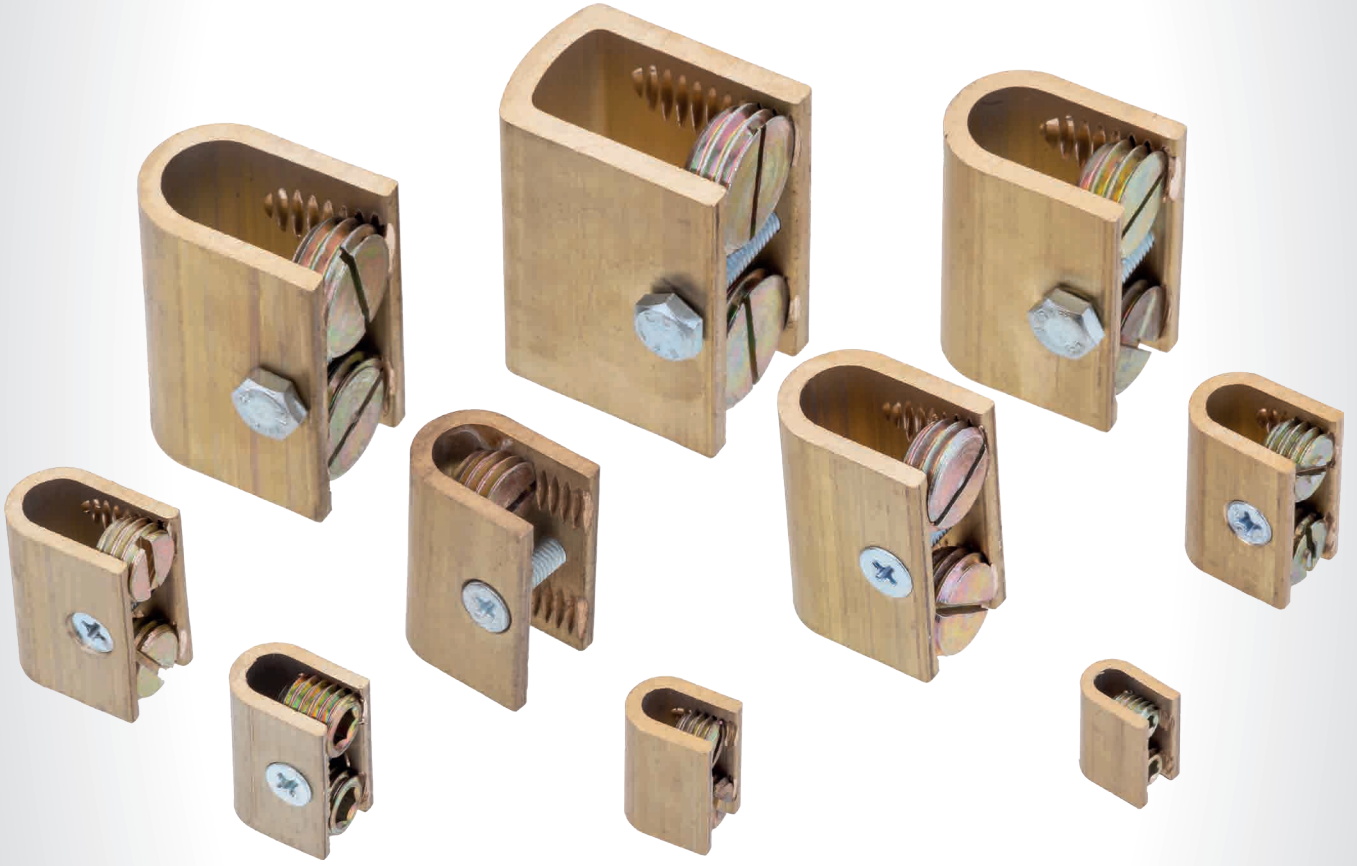
| KOD CODE | AÇIKLAMA EXPLANATION | KUTU ADET BOX PIECES | FİYAT (TÜRK LİRASI) |
|-------------|--------------------------------------|-------------------------|------------------------|
| STM5010 | 2+4 Delikli Pano Topraklama Klemens | 150 | 56,00 |
| STM5011 | 2+5 Delikli Pano Topraklama Klemens | 150 | 60,85 |
| STM5014 | 2+8 Delikli Pano Topraklama Klemens | 150 | 79,50 |
| STM5015 | 2+10 Delikli Pano Topraklama Klemens | 150 | 88,70 |
| STM5016 | 2+13 Delikli Pano Topraklama Klemens | 150 | 102,70 |
| STM5017 | 2+18 Delikli Pano Topraklama Klemens | 150 | 130,85 |
| STM5018 | 2+23 Delikli Pano Topraklama Klemens | 150 | 154,00 |
| STM5019 | 2+28 Delikli Pano Topraklama Klemens | 150 | 217,00 |



Özel ölçüler için iletişime geçebilirsiniz.
You can contact for special sizes.

TOPRAKLAMA EŞ POTANSİYEL BARASI BAR HOLDER SERFIL

| KOD CODE | (20x3) | AÇIKLAMA EXPLANATION | KUTU ADET BOX PIECES | FİYAT (TÜRK LİRASI) |
|-------------|--------|--------------------------|-------------------------|------------------------|
| STM 1049 | | 20 cm (M6-5 Civata) 200A | 1 | 640,00 |
| STM 1050 | | 25 cm (M6-6 Civata) 200A | 1 | 692,00 |
| STM 1051 | | 30 cm (M6-7 Civata) 200A | 1 | 744,00 |
| KOD CODE | (30x3) | AÇIKLAMA EXPLANATION | KUTU ADET BOX PIECES | FİYAT (TÜRK LİRASI) |
| STM 1053 | | 20 cm (M8-5 Civata) 300A | 1 | 792,00 |
| STM 1054 | | 25 cm (M8-6 Civata) 300A | 1 | 870,00 |
| STM 1055 | | 30 cm (M8-7 Civata) 300A | 1 | 948,50 |
| KOD CODE | (30x5) | AÇIKLAMA EXPLANATION | KUTU ADET BOX PIECES | FİYAT (TÜRK LİRASI) |
| STM 1057 | | 20 cm (M8-5 Civata) 400A | 1 | 1.000,00 |
| STM 1058 | | 25 cm (M8-6 Civata) 400A | 1 | 1.130,00 |
| STM 1059 | | 30 cm (M8-7 Civata) 400A | 1 | 1.260,00 |
| KOD CODE | (40x5) | AÇIKLAMA EXPLANATION | KUTU ADET BOX PIECES | FİYAT (TÜRK LİRASI) |
| STM 1061 | | 20 cm (M8-5 Civata) 600A | 1 | 1.175,00 |
| STM 1062 | | 25 cm (M8-6 Civata) 600A | 1 | 1.350,00 |
| STM 1063 | | 30 cm (M8-7 Civata) 600A | 1 | 1.525,00 |



U KLEMENSLER (PRİNÇ)

U TERMINALS

| KOD CODE | KESİT CROSS SECTION | AÇIKLAMA EXPLANATION | KUTU ADET BOX PIECES | FİYAT (TÜRK LİRASI) |
|-----------|---------------------|----------------------|----------------------|-----------------------|
| STM U-6 | 6mm ² | U Klemens (Prinç) | 350 | 27,00 |
| STM U-10 | 10mm ² | U Klemens (Prinç) | 200 | 40,00 |
| STM U-16 | 16mm ² | U Klemens (Prinç) | 125 | 54,00 |
| STM U-25 | 25mm ² | U Klemens (Prinç) | 100 | 68,00 |
| STM U-35 | 35mm ² | U Klemens (Prinç) | 75 | 75,00 |
| STM U-50 | 50mm ² | U Klemens (Prinç) | 50 | 113,00 |
| STM U-70 | 70mm ² | U Klemens (Prinç) | 40 | 140,00 |
| STM U-95 | 95mm ² | U Klemens (Prinç) | 25 | 190,00 |
| STM U-120 | 120mm ² | U Klemens (Prinç) | 20 | 220,00 |
| STM U-150 | 150mm ² | U Klemens (Prinç) | 15 | 325,00 |



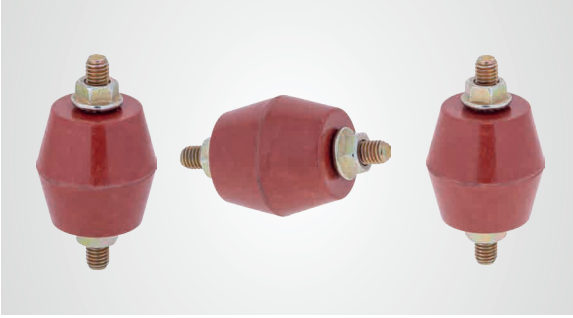
MİNİK FIÇI BOY İZOLATÖR TINY BARREL SIZE INSULATOR

| KOD CODE | AÇIKLAMA EXPLANATION | KUTU ADET BOX PIECES | FİYAT (TÜRK LİRASI) |
|----------------|----------------------------------|-------------------------|------------------------|
| STM M5-2C | İki Tarafı Civatalı | 200 | 28,00 |
| STM M5-2S | İki Tarafı Somonlu | 200 | 42,00 |
| STM M5-1C + 1S | Tek Taraf Somun Tek taraf Civata | 200 | 32,00 |



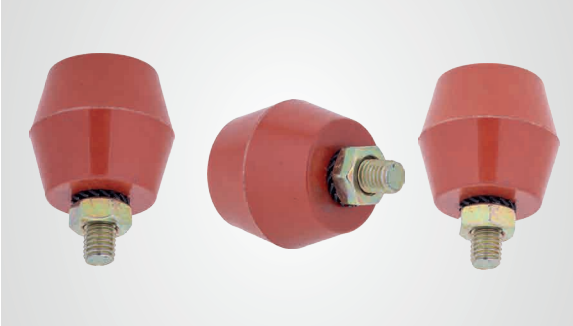
ORTA BOY KONİK İZOLATÖR MEDIUM SIZE CONICAL INSULATOR

| KOD CODE | AÇIKLAMA EXPLANATION | KUTU ADET BOX PIECES | FİYAT (TÜRK LİRASI) |
|----------------|----------------------------------|-------------------------|------------------------|
| STM M6-2C | İki Tarafı Civatalı | 100 | 36,00 |
| STM M6-2S | İki Tarafı Somonlu | 100 | 46,00 |
| STM M6-1C + 1S | Tek Taraf Somun Tek taraf Civata | 100 | 40,00 |



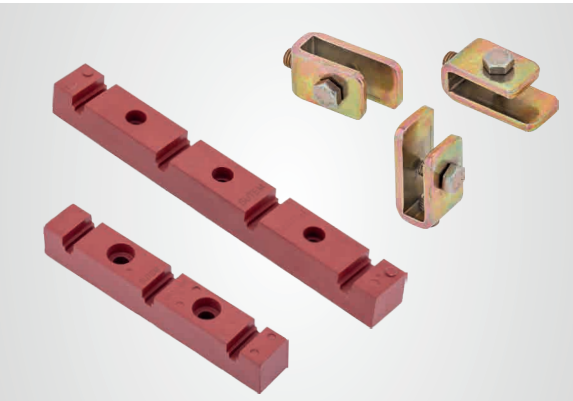
BÜYÜK BOY FIÇI İZOLATÖR MEDIUM SIZE CONICAL INSULATOR

| KOD CODE | AÇIKLAMA EXPLANATION | KUTU ADET BOX PIECES | FİYAT (TÜRK LİRASI) |
|----------------|----------------------------------|-------------------------|------------------------|
| STM M8-2C | İki Tarafı Civatalı | 50 | 62,00 |
| STM M8-2S | İki Tarafı Somonlu | 50 | 70,00 |
| STM M8-1C + 1S | Tek Taraf Somun Tek taraf Civata | 50 | 67,00 |



BÜYÜK BOY FIÇI İZOLATÖR MEDIUM SIZE CONICAL INSULATOR

| KOD CODE | AÇIKLAMA EXPLANATION | KUTU ADET BOX PIECES | FİYAT (TÜRK LİRASI) |
|-----------------|----------------------------------|-------------------------|------------------------|
| STM M10-2C | İki Tarafı Civatalı | 50 | 85,00 |
| STM M10-2S | İki Tarafı Somonlu | 50 | 95,00 |
| STM M10-1C + 1S | Tek Taraf Somun Tek taraf Civata | 50 | 90,00 |



TARAK İZOLATÖR - BARA TUTUCU SERFİL MEDIUM SIZE CONICAL INSULATOR - BAR HOLDER SERFIL

| KOD CODE | AÇIKLAMA EXPLANATION | KUTU ADET BOX PIECES | FİYAT (TÜRK LİRASI) |
|-------------|-------------------------|-------------------------|------------------------|
| STM 31F | 3x1F Tarak İzolatör | 60 | 86,00 |
| STM 32F | 3x2F Tarak İzolatör | 48 | 115,00 |
| STM 31FN | 3x1F+N Tarak İzolatör | 30 | 125,00 |
| STM 32FN | 3x2F+N Tarak İzolatör | 30 | 160,00 |
| STM 01-17 | M8-M10 Serfil | 50 | 65,00 |



AL-CU KLEMENSLER (EKO) AL-CU TERMINALS (ECONOMIC)

| KOD CODE | AÇIKLAMA EXPLANATION | KUTU ADET BOX PIECES | FİYAT (TÜRK LİRASI) |
|-------------|-------------------------|-------------------------|------------------------|
| STM 1060 | A25-B16 AL-CU Klemens | 100 | 43,50 |
| STM 1061 | A40-B25 AL-CU Klemens | 100 | 55,00 |
| STM 1062 | A70-B50 AL-CU Klemens | 50 | 79,00 |
| STM 1063 | A120-B70 AL-CU Klemens | 50 | 165,00 |
| STM 1064 | A240-B120 AL-CU Klemens | 25 | 400,00 |



BRANŞMAN KLEMENSLER (EKO) BRANCH TERMINALS (ECONOMIC)

| KOD CODE | AÇIKLAMA EXPLANATION | KUTU ADET BOX PIECES | FİYAT (TÜRK LİRASI) |
|-------------|----------------------------|-------------------------|------------------------|
| STM 1070 | A25-A25 Branşman Klemens | 100 | 36,40 |
| STM 1071 | A40-A40 Branşman Klemens | 100 | 39,50 |
| STM 1072 | A70-A70 Branşman Klemens | 50 | 64,90 |
| STM 1073 | A120-A120 Branşman Klemens | 50 | 116,50 |
| STM 1074 | A240-A240 Branşman Klemens | 25 | 344,00 |



TIRNAKLI KLEMENSLER NAILED TERMINALS

| KOD CODE | AÇIKLAMA EXPLANATION | KUTU ADET BOX PIECES | FİYAT (TÜRK LİRASI) |
|-------------|--------------------------------|-------------------------|------------------------|
| STM TRN-2 | No:2 25mm Tırnaklı Klemens | 100 | (Fiyat Sorunuz.) |
| STM TRN-3 | No:3 35mm Tırnaklı Klemens | 100 | (Fiyat Sorunuz.) |
| STM TRN-4 | No:4 50mm Tırnaklı Klemens | 50 | (Fiyat Sorunuz.) |
| STM TRN-5 | No:5 70mm Tırnaklı Klemens | 50 | (Fiyat Sorunuz.) |
| STM TRN-67 | No:6 6-7 95-120mm Tırnaklı Kl. | 25 | (Fiyat Sorunuz.) |



STANDART KABLO BAĞLARI STANDARD CABLE TIES

| KOD CODE | BOYUTLAR / DİMENSIYONLAR | | RENK COLOR | BAĞLAMA ÇAPI TİE DİAMETER | MUKAVEMETİ STRENGTH | ADET PIECES | FİYAT (TÜRK LİRASI) |
|-------------|--------------------------|-----|---------------|------------------------------|------------------------|----------------|------------------------|
| | EN | BOY | | | | | |
| STM-02510 | 2,5 | 100 | Siyah-Beyaz | 18 mm | 8.1 kg | 1000 | 0,275 |
| STM-02515 | | 150 | | 35mm | | 1000 | 0,465 |
| STM-02520 | | 200 | | 50mm | | 1000 | 0,655 |
| STM-03615 | 3,6 | 150 | Siyah-Beyaz | 35mm | 18.0 kg | 100 | 0,771 |
| STM-03620 | | 200 | | 50mm | | 100 | 1,010 |
| STM-03625 | | 250 | | 65mm | | 100 | 1,246 |
| STM-03630 | | 300 | | 76mm | | 100 | 1,632 |
| STM-03637 | | 370 | | 102mm | | 100 | 2,031 |
| STM-04820 | 4,8 | 200 | Siyah-Beyaz | 50 mm | 22.0 kg | 100 | 1,265 |
| STM-04825 | | 250 | | 60mm | | 100 | 1,643 |
| STM-04830 | | 300 | | 76 mm | | 100 | 2,048 |
| STM-04838 | | 380 | | 105mm | | 100 | 2,643 |
| STM-04840 | | 400 | | 115 mm | | 100 | 2,925 |
| STM-07630 | 7,6 | 300 | Siyah-Beyaz | 76mm | 55.0 kg | 100 | 4,142 |
| STM-07638 | | 380 | | 95mm | | 100 | 5,441 |
| STM-07645 | | 450 | | 115mm | | 100 | 6,115 |
| STM-07655 | | 550 | | 140mm | | 100 | 7,813 |
| STM-09075 | | 9,0 | | 750 | | Siyah-Beyaz | 200mm |
| STM-09095 | 950 | | 263mm | 100 | 18,04 | | |



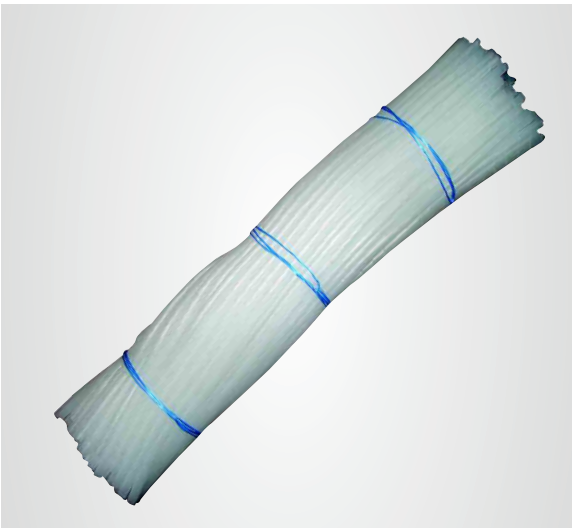
KABLO TOPLAMA ÇORABI POLYCARBONATE BOARDS

| KOD CODE | AÇIKLAMA EXPLANATION | KUTU ADET BOX PIECES | FİYAT (DOLAR) |
|-----------|-----------------------------------|----------------------|---------------|
| STM ÇRP3 | 3mm Kablo Toplama Çorabı / Siyah | 1 | 0,45 \$ |
| STM ÇRP6 | 6mm Kablo Toplama Çorabı / Siyah | 1 | 0,54 \$ |
| STM ÇRP8 | 8mm Kablo Toplama Çorabı / Siyah | 1 | 0,55 \$ |
| STM ÇRP10 | 10mm Kablo Toplama Çorabı / Siyah | 1 | 0,66 \$ |
| STM ÇRP12 | 12mm Kablo Toplama Çorabı / Siyah | 1 | 0,80 \$ |
| STM ÇRP15 | 15mm Kablo Toplama Çorabı / Siyah | 1 | 0,88 \$ |
| STM ÇRP20 | 20mm Kablo Toplama Çorabı / Siyah | 1 | 1,10 \$ |
| STM ÇRP25 | 25mm Kablo Toplama Çorabı / Siyah | 1 | 1,35 \$ |
| STM ÇRP30 | 30mm Kablo Toplama Çorabı / Siyah | 1 | 1,60 \$ |
| STM ÇRP40 | 40mm Kablo Toplama Çorabı / Siyah | 1 | 2,10 \$ |
| STM ÇRP50 | 50mm Kablo Toplama Çorabı / Siyah | 1 | 2,60 \$ |



KABLO TOPLAMA SİRALI CABLE COLLECTION SPIRAL

| KOD CODE | AÇIKLAMA EXPLANATION | KUTU ADET BOX PIECES | FİYAT (TÜRK LİRASI) |
|--------------|--------------------------------|----------------------|---------------------|
| STM KTS.3020 | Ø 20 Kablo Toplama Spirali Gri | 25 | 66,00 |
| STM KTS.3025 | Ø 25 Kablo Toplama Spirali Gri | 20 | 80,00 |
| STM KTS.3030 | Ø 30 Kablo Toplama Spirali Gri | 15 | 97,00 |

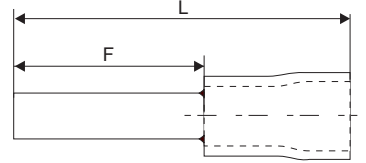


HELEZON PANO SİRALI HELEZON BOARD SPIRAL

| KOD CODE | AÇIKLAMA EXPLANATION | KUTU ADET BOX PIECES | FİYAT (TÜRK LİRASI) |
|-------------|----------------------------------|----------------------|---------------------|
| STM PS.1738 | No.1 (6mm) Helezon Pano Spirali | 100 | 4,22 |
| STM PS.1739 | No.2 (8mm) Helezon Pano Spirali | 100 | 5,96 |
| STM PS.1741 | No.3 (11mm) Helezon Pano Spirali | 100 | 7,05 |
| STM PS.1742 | No.4 (14mm) Helezon Pano Spirali | 50 | 10,16 |
| STM PS.1743 | No.5 (17mm) Helezon Pano Spirali | 50 | 12,36 |

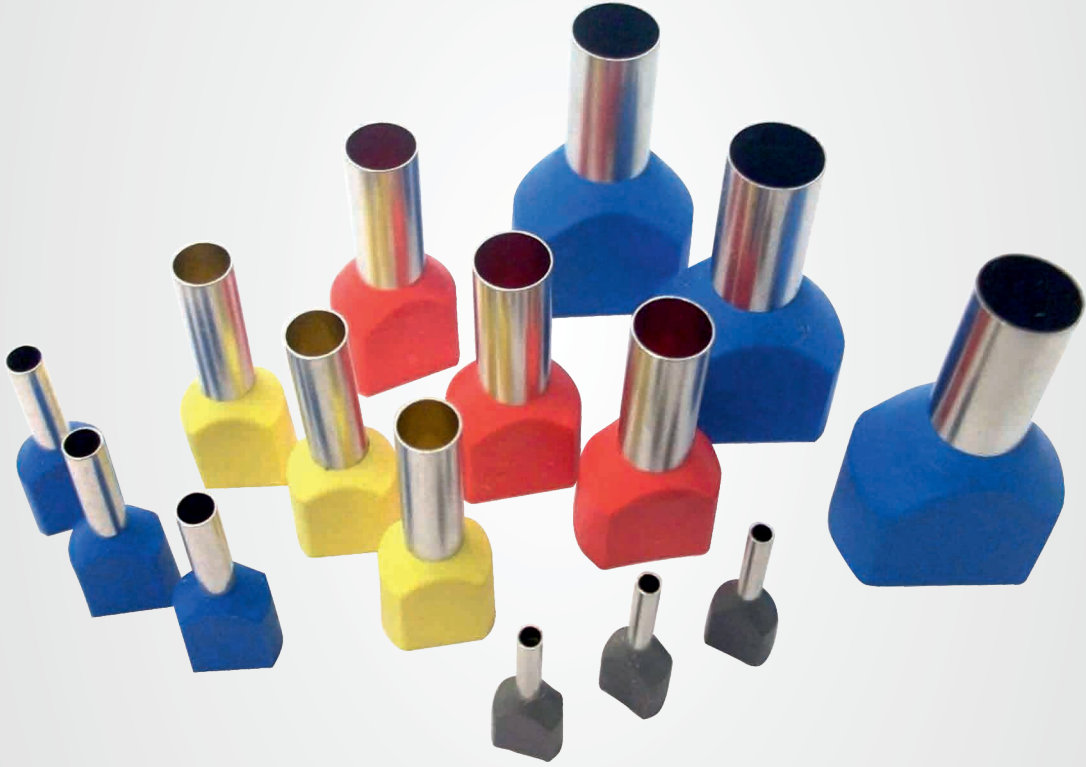


STANDART TEK GİRİŞLİ İZOLELİ YÜKSÜKLERİ (BAKIR) STANDARD SINGLE ENTRY INSULATED CABLE THREADS (COPPER)



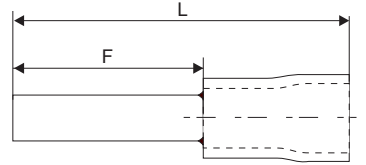
%100 BAKIR PA66

| KOD CODE | ALMAN NORM | FRANSIZ NORM | F BOYUTLAR | L BOYUTLAR | KUTU ADET BOX PIECES | FİYAT (TÜRK LİRASI) |
|-------------|------------|--------------|------------|------------|-------------------------|------------------------|
| STM-IY-0,50 | | | 8 | 12 | 1000 | 0,435 |
| STM-IY-0,75 | | | 8 | 14 | 1000 | 0,435 |
| STM-IY-1,0 | | | 8 | 14 | 1000 | 0,451 |
| STM-IY-1,5 | | | 8 | 14 | 1000 | 0,482 |
| STM-IY-2,5 | | | 8 | 14 | 500 | 0,615 |
| STM-IY-4,0 | | | 10 | 17 | 500 | 1,035 |
| STM-IY-6,0 | | | 12 | 20 | 250 | 1,395 |
| STM-IY-10 | | | 12 | 22 | 100 | 1,775 |
| STM-IY-16 | | | 12 | 24 | 100 | 2,465 |
| STM-IY-25 | | | 16 | 28 | 50 | 4,125 |
| STM-IY-35 | | | 16 | 30 | 50 | 5,132 |
| STM-IY-50 | | | 20 | 36 | 25 | 9,723 |
| STM-IY-70 | | | 20 | 37 | 25 | 18,00 |





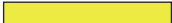












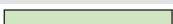


STANDART ÇİFT GİRİŞLİ İZOLELİ YÜKSÜKLERİ (BAKIR)

STANDARD DOUBLE ENTRY INSULATED CABLE THREADS (COPPER)

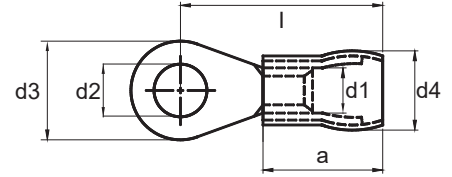


%100 BAKIR PA66

| KOD CODE | ALMAN NORM | FRANSIZ NORM | F BOYUTLAR | L BOYUTLAR | KUTU ADET BOX PIECES | FİYAT (TÜRK LİRASI) |
|-------------|---|---|------------|------------|-------------------------|------------------------|
| STM-CY-0,50 |  |  | 8 | 14 | 1000 | 0,781 |
| STM-CY-0,75 |  |  | 8 | 14 | 500 | 0,825 |
| STM-CY-1,0 |  |  | 8 | 14 | 500 | 0,885 |
| STM-CY-1,5 |  |  | 8 | 14 | 500 | 1,065 |
| STM-CY-2,5 |  |  | 10 | 14 | 250 | 1,711 |
| STM-CY-4,0 |  |  | 12 | 17 | 200 | 1,983 |
| STM-CY-6,0 |  |  | 14 | 20 | 100 | 2,463 |
| STM-CY-10 |  |  | 14 | 27 | 100 | 3,781 |
| STM-CY-16 |  |  | 14 | 31 | 50 | 4,808 |



YUVARLAK TİP İZOLELİ KABLO PABUCLARI ROUND TYPE INSULATED CABLE LUGS



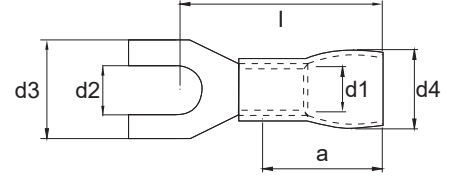
| KOD CODE | RENK COLOR | KABLO KESİT CABLE SECTION | CİVATA ÖLÇÜSÜ BOLT SIZE | BOYUTLAR / DIMENSIONS | | | | | | KUTU ADET BOX PIECES | FİYAT (TÜRK LİRASI) |
|-------------|---------------|--------------------------------|----------------------------|-----------------------|------|------|-----|-----|------|-------------------------|------------------------|
| | | | | d2 | d3 | l | d1 | d4 | a | | |
| SYU - 301 | | 0.50 - 1.50 mm ² | M3 | 3.2 | 6.0 | 16.0 | 1.6 | 4.0 | 10.0 | 200 | 1,428 |
| SYU - 401 | | | M4 | 4.3 | 8.0 | 17.0 | 1.6 | 4.0 | 10.0 | 200 | 2,021 |
| SYU - 501 | | | M5 | 5.3 | 10.0 | 18.0 | 1.6 | 4.0 | 10.0 | 200 | 2,055 |
| SYU - 601 | | | M6 | 6.5 | 10.0 | 18.0 | 1.6 | 4.0 | 10.0 | 200 | 3,375 |
| SYU - 801 | | | M8 | 8,4 | 14.0 | 22.0 | 1.6 | 4.0 | 10.0 | 200 | 3,453 |

| KOD CODE | RENK COLOR | KABLO KESİT CABLE SECTION | CİVATA ÖLÇÜSÜ BOLT SIZE | BOYUTLAR / DIMENSIONS | | | | | | KUTU ADET BOX PIECES | FİYAT (TÜRK LİRASI) |
|-------------|---------------|--------------------------------|----------------------------|-----------------------|------|------|-----|-----|------|-------------------------|------------------------|
| | | | | d2 | d3 | l | d1 | d4 | a | | |
| SYU - 302 | | 1.50 - 2.50 mm ² | M3 | 3.2 | 6.0 | 16.0 | 2.3 | 4.5 | 10.0 | 200 | 2,535 |
| SYU - 402 | | | M4 | 4.3 | 8.0 | 17.0 | 2.3 | 4.5 | 10.0 | 200 | 2,552 |
| SYU - 502 | | | M5 | 5.3 | 10.0 | 19.0 | 2.3 | 4.5 | 10.0 | 200 | 2,565 |
| SYU - 602 | | | M6 | 6.5 | 11.0 | 20.0 | 2.3 | 4.5 | 10.0 | 200 | 3,675 |
| SYU - 802 | | | M8 | 8.4 | 14.0 | 22.0 | 2.3 | 4.5 | 10.0 | 200 | 3,751 |
| SYU - 1002 | | | M10 | 10.5 | 15.0 | 22.0 | 2.3 | 4.5 | 10.0 | 200 | 3,752 |

| KOD CODE | RENK COLOR | KABLO KESİT CABLE SECTION | CİVATA ÖLÇÜSÜ BOLT SIZE | BOYUTLAR / DIMENSIONS | | | | | | KUTU ADET BOX PIECES | FİYAT (TÜRK LİRASI) |
|-------------|---------------|--------------------------------|----------------------------|-----------------------|------|------|-----|-----|------|-------------------------|------------------------|
| | | | | d2 | d3 | l | d1 | d4 | a | | |
| SYU - 406 | | 4.00 - 6.00 mm ² | M4 | 4.3 | 8.6 | 21.0 | 3.6 | 6.3 | 13.0 | 100 | 5,325 |
| SYU - 506 | | | M5 | 5.3 | 10.0 | 22.0 | 3.6 | 6.3 | 13.0 | 100 | 5,403 |
| SYU - 606 | | | M6 | 6.5 | 11.0 | 22.5 | 3.6 | 6.3 | 13.0 | 100 | 6,075 |
| SYU - 806 | | | M8 | 8.4 | 14.0 | 26.0 | 3.6 | 6.3 | 13.0 | 100 | 7,875 |
| SYU - 1006 | | | M10 | 10.5 | 18.0 | 28.0 | 3.6 | 6.3 | 13.0 | 100 | 7,951 |
| SYU - 1206 | | | M12 | 13.0 | 18.0 | 28.0 | 3.6 | 6.3 | 13.0 | 100 | 8,325 |



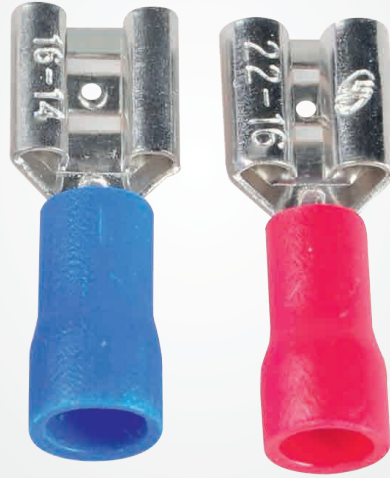
ÇATAL TİP İZOLELİ KABLO PABUCLARI FORK TYPE INSULATED CABLE LUGS



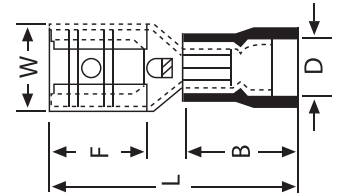
| KOD CODE | RENK COLOR | KABLO KESİT CABLE SECTION | CİVATA ÖLÇÜSÜ BOLT SIZE | BOYUTLAR / DIMENSIONS | | | | | | KUTU ADET BOX PIECES | FİYAT (TÜRK LİRASI) |
|-------------|---------------|--------------------------------|----------------------------|-----------------------|------|------|-----|-----|------|-------------------------|------------------------|
| | | | | d2 | d3 | l | d1 | d4 | a | | |
| SÇU - 3001 | | 0.50 - 1.50 mm ² | M3 | 3.2 | 6.0 | 16.0 | 1.6 | 4.0 | 10.0 | 200 | 1,921 |
| SÇU - 4001 | | | M4 | 4.3 | 8.0 | 17.0 | 1.6 | 4.0 | 10.0 | 200 | 1,981 |
| SÇU - 5001 | | | M5 | 5.3 | 10.0 | 18.0 | 1.6 | 4.0 | 10.0 | 200 | 2,071 |
| SÇU - 6001 | | | M6 | 6.5 | 11.0 | 20.0 | 1.6 | 4.0 | 10.0 | 200 | 2,341 |

| KOD CODE | RENK COLOR | KABLO KESİT CABLE SECTION | CİVATA ÖLÇÜSÜ BOLT SIZE | BOYUTLAR / DIMENSIONS | | | | | | KUTU ADET BOX PIECES | FİYAT (TÜRK LİRASI) |
|-------------|---------------|--------------------------------|----------------------------|-----------------------|------|------|-----|-----|------|-------------------------|------------------------|
| | | | | d2 | d3 | l | d1 | d4 | a | | |
| SÇU - 3002 | | 1.50 - 2.50 mm ² | M3 | 3.2 | 5.5 | 18.0 | 2.3 | 4.5 | 10.0 | 200 | 2,161 |
| SÇU - 4002 | | | M4 | 4.3 | 6.8 | 17.0 | 2.3 | 4.5 | 10.0 | 200 | 2,221 |
| SÇU - 5002 | | | M5 | 5.3 | 10.0 | 19.0 | 2.3 | 4.5 | 10.0 | 200 | 2,251 |
| SÇU - 6002 | | | M6 | 6.5 | 11.0 | 21.0 | 2.3 | 4.5 | 10.0 | 200 | 3,000 |

| KOD CODE | RENK COLOR | KABLO KESİT CABLE SECTION | CİVATA ÖLÇÜSÜ BOLT SIZE | BOYUTLAR / DIMENSIONS | | | | | | KUTU ADET BOX PIECES | FİYAT (TÜRK LİRASI) |
|-------------|---------------|--------------------------------|----------------------------|-----------------------|------|------|-----|-----|------|-------------------------|------------------------|
| | | | | d2 | d3 | l | d1 | d4 | a | | |
| SÇU - 4006 | | 4.00 - 6.00 mm ² | M4 | 4.3 | 8.0 | 21.0 | 3.6 | 6.3 | 13.0 | 100 | 4,875 |
| SÇU - 5006 | | | M5 | 5.3 | 10.0 | 22.0 | 3.6 | 6.3 | 13.0 | 100 | 4,951 |
| SÇU - 6006 | | | M6 | 6.5 | 11.0 | 23.0 | 3.6 | 6.3 | 13.0 | 100 | 6,603 |
| SÇU - 8006 | | | M8 | 8.4 | 14.0 | 26.0 | 3.6 | 6.3 | 13.0 | 100 | 7,725 |



DİŞİ FASTON TİP İZOLELİ KABLO UÇLARI FEMALE FASTON TYPE INSULATED CABLE ENDS



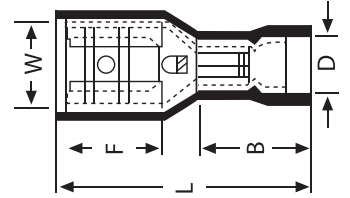
| KOD CODE | RENK COLOR | KABLO KESİT CABLE SECTION | SOKET GEN. SOCKET WIDTH | BOYUTLAR / DİMENSIYONLAR | | | | | KUTU ADET BOX PIECES | FİYAT (TÜRK LİRASI) |
|-------------|---------------|--------------------------------|----------------------------|--------------------------|-----|------|------|-----|-------------------------|------------------------|
| | | | | W | F | L | B | D | | |
| SFD - 1288 | | 0.50 - 1.50 mm ² | 0.8x2.80 | 3.2 | 6.5 | 19.0 | 10.5 | 3.8 | 200 | 1,725 |
| SFD - 1488 | | | 0.8x4.75 | 5.0 | 6.4 | 19.4 | 10.5 | 3.8 | 200 | 1,725 |
| SFD - 1638 | | | 0.8x6.35 | 6.6 | 7.5 | 20.8 | 10.5 | 3.8 | 200 | 2,205 |

| KOD CODE | RENK COLOR | KABLO KESİT CABLE SECTION | SOKET GEN. SOCKET WIDTH | BOYUTLAR / DİMENSIYONLAR | | | | | KUTU ADET BOX PIECES | FİYAT (TÜRK LİRASI) |
|-------------|---------------|--------------------------------|----------------------------|--------------------------|-----|------|------|-----|-------------------------|------------------------|
| | | | | W | F | L | B | D | | |
| SFD - 2288 | | 1.50 - 2.50 mm ² | 0.8x2.80 | 3.2 | 6.5 | 19.0 | 10.5 | 4.7 | 200 | 2,013 |
| SFD - 2488 | | | 0.8x4.75 | 5.0 | 6.4 | 19.4 | 10.5 | 4.7 | 200 | 2,195 |
| SFD - 2638 | | | 0.8x6.35 | 6.6 | 7.5 | 20.8 | 10.5 | 4.7 | 200 | 2,384 |

| KOD CODE | RENK COLOR | KABLO KESİT CABLE SECTION | SOKET GEN. SOCKET WIDTH | BOYUTLAR / DİMENSIYONLAR | | | | | KUTU ADET BOX PIECES | FİYAT (TÜRK LİRASI) |
|-------------|---------------|--------------------------------|----------------------------|--------------------------|-----|------|------|-----|-------------------------|------------------------|
| | | | | W | F | L | B | D | | |
| SFD - 5638 | | 4.00 - 6.00 mm ² | 0.8x2.80 | 3.2 | 6.5 | 19.0 | 10.5 | 3.8 | 200 | 2,609 |



TAM İZOLELİ DİŞİ FASTON TİP KABLO UÇLARI FULLY INSULATED FEMALE FASTON TYPE CABLE ENDS



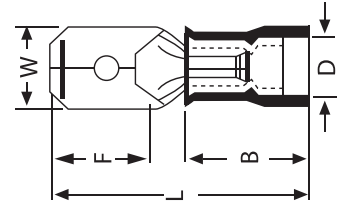
| KOD CODE | RENK COLOR | KABLO KESİT CABLE SECTION | SOKET GEN. SOCKET WIDTH | BOYUTLAR / DİMENSIYON | | | | | KUTU ADET BOX PIECES | FİYAT (TÜRK LİRASI) |
|-------------|---------------|--------------------------------|----------------------------|-----------------------|-----|------|------|-----|-------------------------|------------------------|
| | | | | W | F | L | B | D | | |
| SFFD - 1288 | | 0.50 - 1.50 mm ² | 0.8x2.80 | 3.2 | 6.5 | 19.0 | 10.5 | 3.8 | 200 | 2,163 |
| SFFD - 1488 | | | 0.8x4.75 | 5.0 | 6.4 | 20.5 | 10.5 | 3.8 | 200 | 2,551 |
| SFFD - 1638 | | | 0.8x6.35 | 6.6 | 7.5 | 21.8 | 10.5 | 3.8 | 200 | 3,000 |




| KOD CODE | RENK COLOR | KABLO KESİT CABLE SECTION | SOKET GEN. SOCKET WIDTH | BOYUTLAR / DİMENSIYON | | | | | KUTU ADET BOX PIECES | FİYAT (TÜRK LİRASI) |
|-------------|---------------|--------------------------------|----------------------------|-----------------------|-----|------|------|-----|-------------------------|------------------------|
| | | | | W | F | L | B | D | | |
| SFFD - 2288 | | 1.50 - 2.50 mm ² | 0.8x2.80 | 3.2 | 6.5 | 20.0 | 10.5 | 4.7 | 200 | 2,551 |
| SFFD - 2488 | | | 0.8x4.75 | 5.0 | 6.4 | 20.2 | 10.5 | 4.7 | 200 | 2,605 |
| SFFD - 2638 | | | 0.8x6.35 | 6.6 | 7.5 | 22.2 | 10.5 | 4.7 | 200 | 3,155 |




| KOD CODE | RENK COLOR | KABLO KESİT CABLE SECTION | SOKET GEN. SOCKET WIDTH | BOYUTLAR / DİMENSIYON | | | | | KUTU ADET BOX PIECES | FİYAT (TÜRK LİRASI) |
|-------------|---------------|--------------------------------|----------------------------|-----------------------|-----|------|------|-----|-------------------------|------------------------|
| | | | | W | F | L | B | D | | |
| SFFD - 5638 | | 4.00 - 6.00 mm ² | 0.8x6.35 | 6.6 | 7.5 | 24.2 | 12.5 | 6.2 | 100 | 3,605 |




ERKEK FASTON TİP TERMİNAL UÇLARI MALE FASTON TYPE TERMINAL TERMINALS



| KOD CODE | RENK COLOR | KABLO KESİT CABLE SECTION | SOKET GEN. SOCKET WIDTH | BOYUTLAR / DİMENSIYONLAR | | | | | KUTU ADET BOX PIECES | FİYAT (TÜRK LİRASI) |
|-------------|---|--------------------------------|----------------------------|--------------------------|------|------|------|-----|-------------------------|------------------------|
| | | | | W | F | L | B | D | | |
| SFE - 1288 |  | 0.50 - 1.50 mm ² | 0.8x2.80 | 2.8 | 6.5 | 19.2 | 10.5 | 3.8 | 200 | 1,425 |
| SFE - 1488 |  | | 0.8x4.75 | 4.8 | 6.7 | 19.8 | 10.5 | 3.8 | 200 | 1,625 |
| SFE - 1638 |  | | 0.8x6.35 | 6.35 | 6.35 | 21.8 | 10.5 | 3.8 | 200 | 2,071 |

| KOD CODE | RENK COLOR | KABLO KESİT CABLE SECTION | SOKET GEN. SOCKET WIDTH | BOYUTLAR / DİMENSIYONLAR | | | | | KUTU ADET BOX PIECES | FİYAT (TÜRK LİRASI) |
|-------------|---|--------------------------------|----------------------------|--------------------------|-----|------|------|-----|-------------------------|------------------------|
| | | | | W | F | L | B | D | | |
| SFE - 2288 |  | 1.50 - 2.50 mm ² | 0.8x2.80 | 2.8 | 6.7 | 19.8 | 10.5 | 4.7 | 200 | 1,425 |
| SFE - 2488 |  | | 0.8x4.75 | 4.8 | 6.7 | 19.8 | 10.5 | 4.7 | 200 | 1,803 |
| SFE - 2638 |  | | 0.8x6.35 | 6.35 | 7.7 | 21.8 | 10.5 | 4.7 | 200 | 2,163 |

| KOD CODE | RENK COLOR | KABLO KESİT CABLE SECTION | SOKET GEN. SOCKET WIDTH | BOYUTLAR / DİMENSIYONLAR | | | | | KUTU ADET BOX PIECES | FİYAT (TÜRK LİRASI) |
|-------------|---|--------------------------------|----------------------------|--------------------------|-----|------|------|-----|-------------------------|------------------------|
| | | | | W | F | L | B | D | | |
| SFE - 5638 |  | 4.00 - 6.00 mm ² | 0.8x6.35 | 6.6 | 7.7 | 24.8 | 13.0 | 6.2 | 200 | 2,551 |



ISI İLE DARALAN SİYAH MAKARONLAR

HEAT SHREDDING BLACK PASTA

| KOD CODE | ÖLÇÜ MEASUREMENT | RENK COLOR | AMBALAJ (m) / MAKARA PACKAGING (m) / Reel | FİYAT (DOLAR) |
|-------------|---------------------|---------------|--|------------------|
| SDM 1,5 | 1,5 | Siyah | 200 | 0,146 \$ |
| SDM 2,0 | 2,0 | Siyah | 200 | 0,173 \$ |
| SDM 2,4 | 2,4 | Siyah | 200 | 0,173 \$ |
| SDM 2,5 | 2,5 | Siyah | 200 | 0,225 \$ |
| SDM 3,0 | 3,0 | Siyah | 200 | 0,241 \$ |
| SDM 3,2 | 3,2 | Siyah | 200 | 0,241 \$ |
| SDM 3,5 | 3,5 | Siyah | 200 | 0,255 \$ |
| SDM 4,0 | 4,0 | Siyah | 200 | 0,303 \$ |
| SDM 4,5 | 4,5 | Siyah | 200 | 0,345 \$ |
| SDM 4,8 | 4,8 | Siyah | 200 | 0,345 \$ |
| SDM 5,0 | 5,0 | Siyah | 200 | 0,375 \$ |
| SDM 6,0 | 6,0 | Siyah | 200 | 0,435 \$ |
| SDM 6,4 | 6,4 | Siyah | 200 | 0,435 \$ |
| SDM 7,0 | 7,0 | Siyah | 100 | 0,525 \$ |
| SDM 8,0 | 8,0 | Siyah | 100 | 0,525 \$ |
| SDM 9,5 | 9,5 | Siyah | 100 | 0,525 \$ |
| SDM 10,0 | 10,0 | Siyah | 100 | 0,585 \$ |
| SDM 12,7 | 12,7 | Siyah | 100 | 0,675 \$ |
| SDM 13,0 | 13,0 | Siyah | 100 | 0,723 \$ |
| SDM 14,0 | 14,0 | Siyah | 100 | 0,841 \$ |
| SDM 16,0 | 16,0 | Siyah | 100 | 1,125 \$ |
| SDM 18,0 | 18,0 | Siyah | 100 | 1,471 \$ |
| SDM 19,1 | 19,1 | Siyah | 100 | 1,471 \$ |
| SDM 20,0 | 20,0 | Siyah | 100 | 1,875 \$ |
| SDM 22,0 | 22,0 | Siyah | 100 | 2,325 \$ |
| SDM 25,0 | 25,4 | Siyah | 50 | 2,495 \$ |
| SDM 30,0 | 30,0 | Siyah | 50 | 3,225 \$ |
| SDM 32,0 | 32,0 | Siyah | 50 | 3,225 \$ |
| SDM 35,0 | 35,0 | Siyah | 50 | 4,055 \$ |
| SDM 38,0 | 38,0 | Siyah | 50 | 4,509 \$ |
| SDM 40,0 | 40,0 | Siyah | 50 | 4,509 \$ |
| SDM 51,0 | 51,0 | Siyah | 25 | 5,709 \$ |
| SDM 60,0 | 60,0 | Siyah | 25 | 7,655 \$ |
| SDM 70,0 | 70,0 | Siyah | 25 | 10,25 \$ |
| SDM 80,0 | 80,0 | Siyah | 25 | 11,25 \$ |

6-16 mm YÜKSÜK SIKMA PENSESİ

6-16 mm SPRING PLIERS



| KOD CODE | AÇIKLAMA EXPLANATION | KUTU ADET BOX PIECES | FİYAT (USD-AR) |
|----------|------------------------------|----------------------|----------------|
| YAC-6 | 6-16 mm Yüksük Sıkma Pensesi | 1 | 112,50 \$ |

0,8-6 mm YÜKSÜK SIKMA PENSESİ

0,8-6 mm SPRING PLIERS



| KOD CODE | AÇIKLAMA EXPLANATION | KUTU ADET BOX PIECES | FİYAT (USD-AR) |
|----------|--------------------------------|----------------------|----------------|
| YAC-8 | 0,80-6 mm Yüksük Sıkma Pensesi | 1 | 177,00 \$ |

10-120 SKP SIKMA PENSESİ

10-120 SKP CRIMP PLIERS



| KOD CODE | AÇIKLAMA EXPLANATION | KUTU ADET BOX PIECES | FİYAT (USD-AR) |
|-----------|--------------------------|----------------------|----------------|
| SKP CK 06 | 10-120 Skp Sıkma Pensesi | 1 | 228,00 \$ |

16-300 HİDROLİK SKP SIKMA PENSESİ (ÇANTAL SET)

16-300 HYDRAULIC SKP CRIMP PLIERS (SET WITH BAG)



| KOD CODE | AÇIKLAMA EXPLANATION | KUTU ADET BOX PIECES | FİYAT (USD-AR) |
|------------|-----------------------------------|----------------------|----------------|
| SKP HD 300 | 16-300 Hidrolik Skp Sıkma Pensesi | 1 | 250,00 \$ |

6-50 mm MEKANİK SKP SIKMA PENSESİ

6-50 mm MECHANICAL SKP CRIMPING PLIERS



| KOD CODE | AÇIKLAMA EXPLANATION | KUTU ADET BOX PIECES | FİYAT (DOLAR) |
|-------------|---------------------------|-------------------------|------------------|
| CK 05 | 6-50 mm SKP Sıkma Pensesi | 1 | 150,00 \$ |

KABLO KESME MAKASI

CABLE CUTTING SCISSORS



| KOD CODE | AÇIKLAMA EXPLANATION | KUTU ADET BOX PIECES | FİYAT (DOLAR) |
|-------------|------------------------------------|-------------------------|------------------|
| TC 100 | Max. 1x150 NYAF 120mm ² | 1 | 115,50 \$ |

KABLO KESME MAKASI

CABLE CUTTING SCISSORS



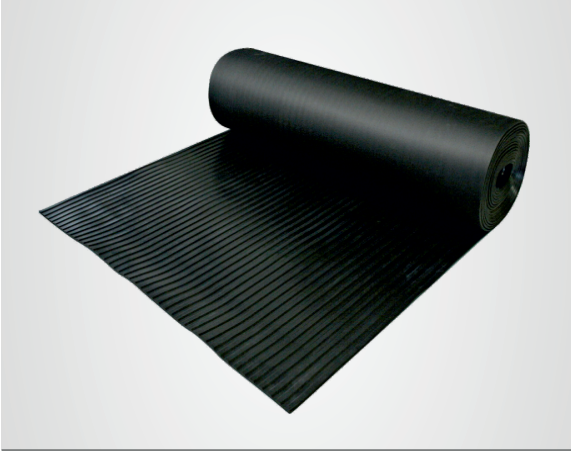
| KOD CODE | AÇIKLAMA EXPLANATION | KUTU ADET BOX PIECES | FİYAT (DOLAR) |
|-------------|-------------------------------------|-------------------------|------------------|
| TC 250 | Max. 3x70+50 NYY 240mm ² | 1 | 220,00 \$ |

PANO İÇİ TERMOSTATLAR

THERMOSTATS IN THE PANEL



| KOD CODE | AÇIKLAMA EXPLANATION | KUTU ADET BOX PIECES | FİYAT (DOLAR) |
|-------------|------------------------------------|-------------------------|------------------|
| STM-26 I | 0-60 Pano Isıtma için (Ray Montaj) | 10 | 15,00 \$ |
| STM-26 S | 0-10 Pano Sog için (Ray Montaj) | 10 | 15,00 \$ |



İZOLE HALILAR INSULATED CARPET

| KOD CODE | AÇIKLAMA EXPLANATION | KUTU ADET BOX PIECES | FİYAT (TÜRK LİRASI) |
|-------------|-------------------------|-------------------------|------------------------|
| STM IZL 1 | 1-6 KW - 2mm | 1 | 460,00 |
| STM IZL 15 | 15 KW - 3mm | 1 | 750,00 |
| STM IZL 30 | 30 KW - 4mm | 1 | 990,00 |
| STM IZL 40 | 40 KW - 5mm | 1 | 1.210,00 |



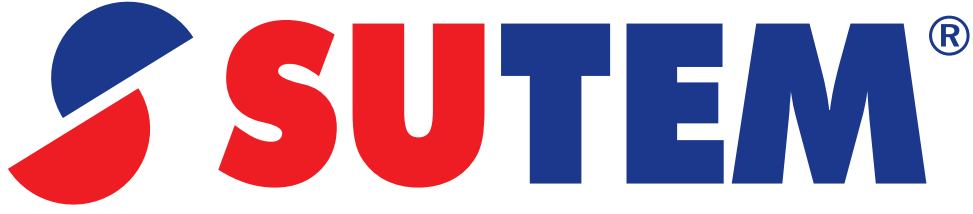
ALÜMİNYUM ÖLÜM TEHLİKE LEVHASI ALUMINUM DEATH HAZARD BOARD

| KOD CODE | AÇIKLAMA EXPLANATION | KUTU ADET BOX PIECES | FİYAT (TÜRK LİRASI) |
|-------------|----------------------------|-------------------------|------------------------|
| STM ALM | Alüminyum Levha (14x21 cm) | 150 | 56,00 |

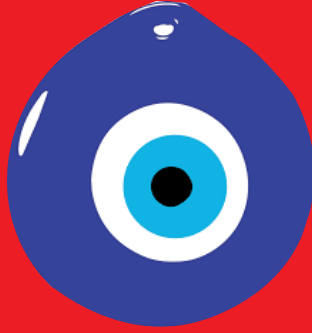


OPAK KAPAKLI ABS PANOLAR ABS BOARDS WITH OPAQUE COVER

| KOD CODE | AÇIKLAMA EXPLANATION | KUTU ADET BOX PIECES | FİYAT (TÜRK LİRASI) |
|-------------|--------------------------|-------------------------|------------------------|
| STM 203012 | 200 x 300 x 120 ABS PANO | 1 | 780,00 |
| STM 253515 | 250 x 350 x 150 ABS PANO | 1 | 1.050,00 |
| STM 304016 | 300 x 400 x 165 ABS PANO | 1 | 1.350,00 |
| STM 406020 | 400 x 600 x 200 ABS PANO | 1 | 2.670,00 |
| STM 506023 | 500 x 600 x 230 ABS PANO | 1 | 3.645,00 |
| STM 507025 | 500 x 700 x 250 ABS PANO | 1 | 4.470,00 |



for perfect connections



18. Yıl



MERKEZ

Emekyemez Mah. Tenha Sk. No: 8/A
Karaköy / Beyoğlu - İSTANBUL
Tel: +90 212 238 54 14

info@sutemelektrik.com



FABRİKA

Des Sanayi Sitesi A-12 Blok 108. Sokak No:26
Dudullu OSB / Ümraniye - İSTANBUL

fabrika@sutemelektrik.com



www.sutemelektrik.com